

Rec No- 2021010240
6/1/2021



प्रमुख चिकित्सक
राजकीय जयपुरिया चिकित्सालय
क्रमांक- 6-1-21
दिनांक- 12/3/21
हस्ताक्षर- [Signature]

राजस्थान सरकार
कार्यालय प्रमुख चिकित्सा अधिकारी रूकमणी देवी बेनी प्रसाद राजकीय जयपुरिया चिकित्सालय, जयपुर
(चिकित्सा एवं स्वास्थ्य विभाग)
जेएलएन मार्ग, मालवीय नगर रेलवे क्रॉसिंग के पास जयपुर 302019
E-Mail ID: jayuriahospital@substore@gmail.com फोन नं. 2562034

क्रमांक- आरएमएससी सदस्य/2020/ 55
श्रीमान प्रभारी अधिकारी
मेडिकल कॉलेज औषधि भण्डार गृह
जयपुर।

दिनांक- 16/12-2020

विषय- वर्ष 2021-22 की औषधियों सर्जिकल एवं सूक्ष्म की वार्षिक मांग भिजवाने बाबत।
सन्दर्भ-1. श्रीमान प्रबन्ध निदेशक, आर.एम.एस.सी. के पत्र क्रमांक एफ00/ आरएमएससी / लॉजिस्टिक्स / 2020-21/499
दिनांक 18.11.2020 के क्रम में।
2. प्रभारी अधिकारी मेडिकल कॉलेज औषधि भण्डार गृह, जयपुर के पत्र क्रमांक: एफ 070 / एम.सी.डी. डबल्यू /
2020-21 / 1502 दिनांक 20.11.2020.

महोदय,

उपरोक्त संबंधित विषयान्तर्गत निवेदन है की प्रमुख शासन सचिव के पत्र क्रमांक प.1(1)चिस्वा/मुप-2/2020 दिनांक 04.09.2020 की अनुपालना में राजकीय जयपुरिया चिकित्सालय जयपुर को कोरोना संक्रमित मरीजों के उपचार हेतु दिनांक 06.09.2020 से पूर्ण समर्पित (Dedicated) अस्पताल घोषित किया गया है। एवं वर्तमान में Covid-19 Dedicated के रूप में संचालित हो रहा है यह (वार्षिक मांग 2021-22) वार्षिक मांग वर्ष 2019-20 की औषध उपभोग को देखते हुए बनाई गई है अतः उक्त वार्षिक मांग वित्तीय वर्ष 2021-22 यदि राजकीय जयपुरिया चिकित्सालय जयपुर Covid Free घोषित हो जाता है तो उक्त वार्षिक मांग यथावत रहेगी, परन्तु यह चिकित्सालय वित्तीय वर्ष 2021-22 में भी Covid-19 Dedicated अस्पताल रहता है, तो उक्त वार्षिक मांग वर्ष 2021-22 का उपभोग कम हो जायेगा। अतः इस चिकित्सालय में आपके द्वारा चाही गई वर्ष 2021-22 की औषधियों सर्जिकल एवं सूक्ष्म की वार्षिक मांग ई-औषधि सॉफ्टवेयर द्वारा निर्धारित अवधि में प्रविष्ट कर मय हार्ड कॉपी इस पत्र के साथ सलगन करके भिजवाई जा रही है।

अग्रिम आवश्यक कार्यवाही एवं सूचनार्थ हेतु प्रेषित है।
सलगन- उपरोक्तनुसार

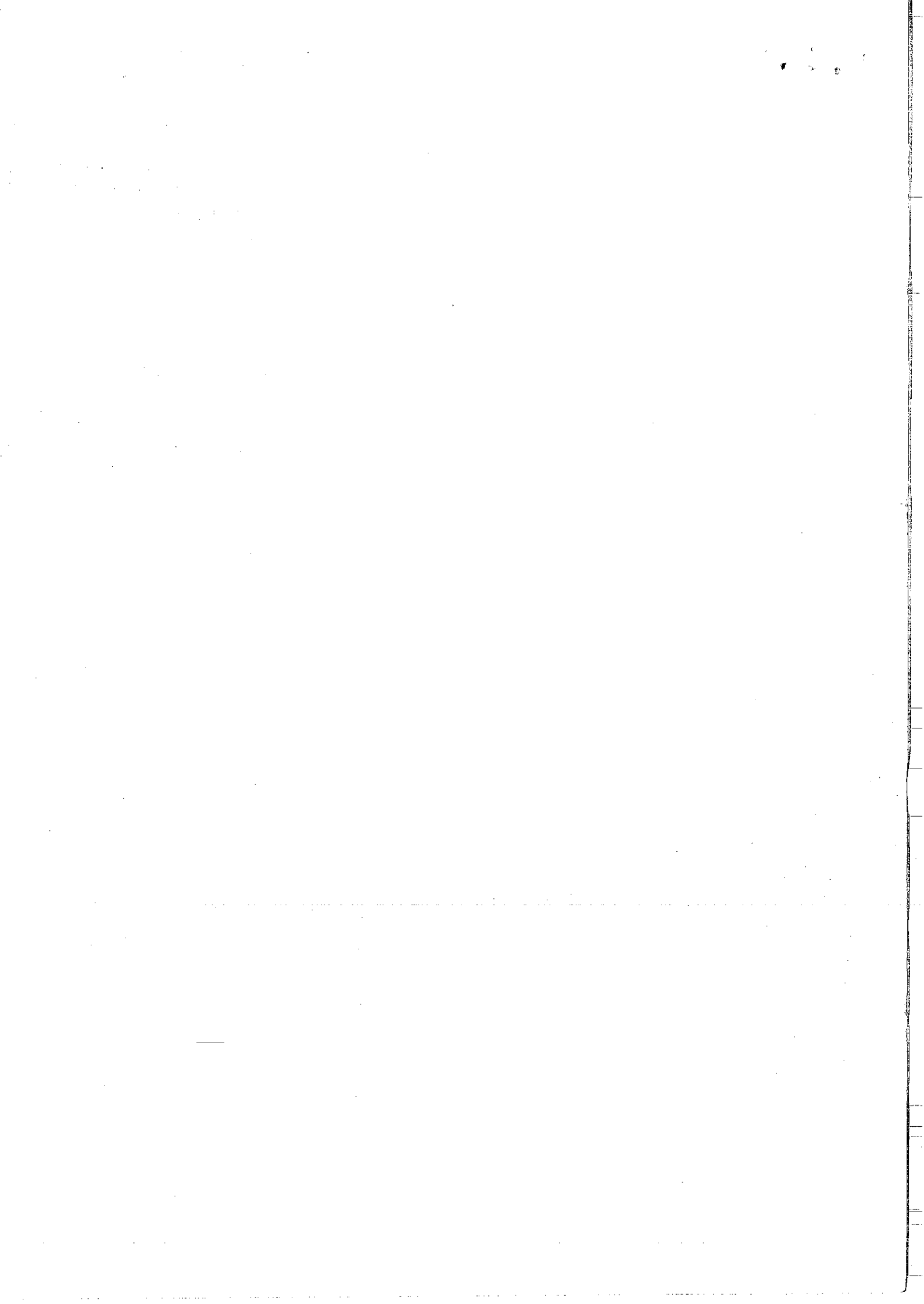
क्रमांक- आरएमएससी सदस्य/2020/ 55
प्रभारी अधिकारी
मेडिकल कॉलेज औषधि भण्डार गृह
जयपुर।

- प्रतिलिपि- प्रभारी को सूचनार्थ एवं आवश्यक कार्यवाही हेतु प्रेषित है-
1. श्रीमान प्रबन्ध निदेशक महोदय, आरएमएससी, जयपुर।
 2. श्रीमान अतिरिक्त निदेशक (प्रशासन) चिकित्सा शिक्षा विभाग, राज. जयपुर।
 3. श्रीमान निदेशक (जन.स्वा.) चिकित्सा एवं स्वास्थ्य सेवाएं राजस्थान जयपुर।
 4. श्रीमान प्रधानाचार्य एवं नियंत्रक संवाई मानसिंह मेडिकल कॉलेज एवं सलगन चिकित्सालय जयपुर।
 5. श्रीमान प्रभारी अधिकारी राजकीय जयपुरिया चिकित्सालय जयपुर।
 6. रक्षित पत्रायली।

प्रमुख चिकित्सक
राजकीय जयपुरिया चिकित्सालय
जयपुर।
दिनांक- 16/12-20

प्रमुख चिकित्सक
राजकीय जयपुरिया चिकित्सालय
जयपुर।

AGM(L)
Rkhas
31/12
6/1/21
Rkhas
31/12



Report Date & Time : 15/12/2020 15:13:35

Institute Name : Jaipuria Hospital Dh
Annual Demand for the FY : 2021-2022

S.No.	Drug Name	Drug Code	Demand 20_21	IndentQty 20_21	ReceivedfromDDW 20_21	LocalPurchaseQty 20_21	Total Rec Qty	Demand Qty 21_22	Demand Value 21_22
1	Liquid Medical Oxygen (LMO) [799]	799	0	0	0	0	0	50000	0
2	Bupivacaine Hydrochloride in Dextrose Injection USP Each ml contains Bupivacaine Hydrochloride 5.0 mg Dextrose 80.0 mg [2]	2	3500	1350	130	290	420	1500	8250
3	Bupivacaine Inj IP 0.5% [4]	4	50	0	0	0	0	20	250
4	Halothane BP [6]	6	4	0	0	0	0	8	7968
5	Isoflurane USP [7]	7	60	0	0	0	0	50	18500
6	Ketamine Inj IP 50 mg/ml [8]	8	250	0	0	0	0	150	4565
7	Lignocaine Ointment 5 o/o [9]	9	2000	0	0	0	0	500	3975
8	Lignocaine and Adrenaline Inj IP Each ml. Contains Lignocaine Hydrochloride IP 20 mg Adrenaline IP 0.01 mg [10]	10	300	120	120	0	120	150	1238
9	Lignocaine and Dextrose injection IP Each ml contains Lignocaine 50 mg and Dextrose (monohydrate) 75 mg [11]	11	20	0	0	0	0	50	204
10	Lignocaine Gel IP 2% [12]	12	6000	0	0	0	0	3000	23400
11	Lignocaine Inj IP 2 o/o [13]	13	2000	0	0	0	0	1500	12150
12	Propofol Inj IP 10 mg/	14	700	150	150	0	150	500	16500

प्रभारी अधिकारी


सहायकी निदेशक एवं योजना

सहायकी निदेशक एवं योजना

सहायकी निदेशक एवं योजना


S.No.	Drug Name	Drug Code	Demand 20_21	IndentQty 20_21	ReceivedfromDDW 20_21	LocalPurchaseQty 20_21	Total Rec Qty	Demand_Qty 21_22	Demand Value 21_22
	ml [14]								
13	Thiopentone Inj IP 0.5 g [15]	15	10	10	10	0	10	20	450
14	Sevoflurane [491]	491	10	10	12	0	12	20	55260
15	Atropine Sulphate Injection 0.6mg/ml [654]	654	4000	1700	725	0	725	3000	5016
16	Diclofenac Sodium Inj IP 25 mg/ml (IM/IV Use) [19]	19	60000	20000	20000	0	20000	30000	47700
17	Diclofenac Gastro Resistant Tablet IP 50 mg(Enteric Coated) [20]	20	400000	60000	96000	0	96000	200000	31900
18	Fentanyl Citrate Injection IP 2 ml [21]	21	600	0	0	0	0	400	3940
19	Ibuprofen and Paracetamol Tablets IP Ibuprofen 400 mg+ Paracetamol 325 mg [22]	22	500000	0	0	0	0	300000	233250
20	Ibuprofen Tab IP 200 mg (Coated) [23]	23	20000	0	0	0	0	10000	2460
21	Ibuprofen Tab IP 400 mg (Coated) [24]	24	60000	0	0	0	0	20000	10000
22	Morphine Sulphate Inj IP 10mg/ml [25]	25	200	0	0	0	0	0	0
23	Paracetamol Drops Paediatric Paracetamol Oral Suspension IP(Each ml contains Paracetamol 150mg) [26]	26	3000	0	0	0	0	2000	10380
24	Paracetamol Syrup IP 125 mg/5ml (Detail in RC) [27]	27	8000	1800	2000	0	2000	4000	24320
25	Paracetamol Tab IP 500 mg [28]	28	600000	0	0	0	0	400000	117640
26	Paracetamol Inj. 150 mg /ml [29]	29	2000	0	0	0	0	1000	1521
27	Pentazocine Inj IP 30mg /ml (IM/IV use) [30]	30	1000	0	0	0	0	700	3780

S.No.	Drug Name	Drug Code	Demand 20_21	IndentQty 20_21	ReceivedfromDDW 20_21	LocalPurchaseQty 20_21	Total Rec Qty	Demand Qty 21_22	Demand Value 21_22
28	Tramadol Cap IP 50 mg [32]	32	20000	10000	10000	0	10000	10000	2840
29	Tramadol Inj 50 mg/ml [33]	33	10000	0	0	0	0	4000	7800
30	Indomethacin Cap IP 25 mg [436]	436	2000	1000	1000	0	1000	0	0
31	Diclofenac Prolonged Release Tablet IP 100 mg [437]	437	5000	0	0	0	0	0	0
32	Ibuprofen Oral Suspension BP /USP 100 mg/ 5 ml [477]	477	4000	1200	700	0	700	2000	12380
33	Diclofenac Sod + Paracetamol Tablets IP Diclofenac Sod 50 mg + Paracetamol 325 mg [483]	483	600000	200000	200000	0	200000	400000	98040
34	Acceclofenac and Paracetamol Tablets Acceclofenac 100 mg and Paracetamol 325 mg [492]	492	400000	0	0	0	0	200000	66800
35	Diclofenac Gel: Diclofenac diethylamine 1.16%, Methyl salicylate 10%, Linseed oil 3%, Menthol 5% [493]	493	30000	6400	6400	0	6400	20000	123800
36	Etoricoxib Tab IP 120mg [495]	495	200000	50000	50400	0	50400	150000	211950
37	Mefenamic Acid Tablets BP 500 mg [496]	496	20000	0	0	0	0	10000	5195
38	Fentanyl Citrate Injection 50mcg/ml [555]	655	1000	0	0	0	0	200	8290
39	Naproxen Tablet IP 500mg [656]	656	50000	30000	0	0	0	30000	62634
40	Naproxen Tablet IP 250mg [657]	657	20000	0	0	0	0	10000	15760


 Director
 Public Health
 District Health Officer
 District Health Office
 Bangalore

S.No.	Drug Name	Drug Code	Demand 20_21	IndentQty 20_21	ReceivedfromDDW 20_21	LocalPurchaseQty 20_21	Total Rec Qty	Demand_Qty 21_22	Demand Value 21_22
41	Etoricoxib Tablet 90 mg [658]	658	400000	0	0	0	0	200000	226000
42	Aspirin Tablet IP (Gastro-Resistant) 150 mg [679]	679	400000	0	0	0	0	25000	7945
43	Butorphanol tartrate Injection USP 1mg/ml 1ml Size [694]	694	500	0	0	0	0	100	0
44	Diclofenac Sodium aqueous Injection 75mg/ml 1ml Size, IV & IM use [695]	695	20000	7000	0	0	0	20000	35000
45	Paracetamol infusion IP 1% w/v 100ml Size [696]	696	6000	2600	1000	0	1000	2000	30000
46	Ketorolac Tromethamine Dispersible Tablet 10 mg(each Uncoated Dispersible tablet contains Ketorolac Tromethamine 10 mg) [697]	697	2000	0	0	0	0	0	0
47	Baclofen Tablet IP 10 mg (Each Uncoated Tablet contains Baclofen IP 10 mg) [698]	698	40000	30000	5000	0	5000	0	0
48	Tizanidine Hydrochloride Tablet IP 2 mg (Each Uncoated Tablet contains Tizanidine Hydrochloride IP 2 mg) [699]	699	0	0	0	0	0	0	0
49	Adrenaline Injection IP 1mg/ml IM/IV use [34]	34	4000	650	950	0	950	2000	7880
50	Betamethasone Tab IP 0.5mg [35]	35	1000	1000	400	0	400	500	85
51	Chlorpheniramine Maleate Tab IP 4mg [37]	37	400000	40000	70000	0	70000	160000	11360

S.No.	Drug Name	Drug Code	Demand 20_21	IndentQty 20_21	ReceivedfromDBW 20_21	LocalPurchaseQty 20_21	Total Rec Qty	Demand_Qty 21_22	Demand_Value 21_22
52	Dexamethasone Inj IP 8mg/2ml [39]	39	8000	35500	6900	2000	8900	8000	22560
53	Dexamethasone Tab IP 0.5 mg [40]	40	2000	0	0	0	0	2000	250
54	Hydrocortisone Sodium Succinate Injection IP 100 mg base / vial (IM/IV use) [42]	42	8000	1000	1000	0	1000	6000	47760
55	Hydroxyzine Tab IP 25 mg [43]	43	100000	94000	3000	0	3000	100000	26970
56	Methyl Prednisolone Sodium Succinate for Injection USP 500 mg [44]	44	100	1550	1350	0	1350	200	16980
57	Pheniramine Inj IP 22.75mg./ml [45]	45	4000	1000	1200	0	1200	2000	3580
58	Prednisolone Tab IP 5 mg [47]	47	5000	5000	5000	0	5000	5000	1600
59	Promethazine Syrup IP 5 mg/5ml [48]	48	300	450	0	0	0	200	1380
60	Promethazine Inj IP 25mg/ml [49]	49	2000	0	0	0	0	1000	1990
61	Promethazine Tab IP 25 mg [50]	50	0	0	0	0	0	0	0
62	Betamethasone Sodium Inj IP 4mg/ml [418]	418	3000	1000	1000	0	1000	2000	3800.
63	Prednisolone Tablet IP 10 mg [469]	469	40000	0	0	0	0	25000	13950
64	Prednisolone Tab IP 20 mg [470]	470	10000	8000	8000	0	8000	10000	10795
65	Anticold syrup Each 5 ml contains Phenylephrine Hydrochloride 2.5mg, Chlorpheniramine maleate 1 mg, and Paracetamol 125 mg [497]	497	10000	1000	1000	0	1000	6000	25260


 RECEIVED
 11/11/2021
 11:58 AM


S.No.	Drug Name	Drug Code	Demand 20_21	IndentQty 20_21	ReceivedfromDDW 20_21	LocalPurchaseQty 20_21	Total Rec Qty	Demand Qty 21_22	Demand Value 21_22
66	Cetirizine,Phenylephrine & Paracetamol Tablets Cetirizine 5 mg, Phenylephrine 10 mg & Paracetamol 325 mg Tab [498]	498	160000	60000	40000	0	40000	100000	32900
67	Cetirizine syrup IP 5mg/ 5 ml [499]	499	4000	600	600	0	600	2000	7420
68	Levocetirizine Tablet 5mg [659]	659	1000000	500000	280000	0	280000	800000	122400
69	Montelukast(10mg) + Levocetirizine Tablet (5mg) [660]	660	200000	30000	2000	0	2000	300000	176250
70	Dexamethasone Tablet IP 4 mg (Each Uncoated Tablet contains Dexamethasone IP 4 mg) [700]	700	2000	0	0	0	0	2000	0
71	Naloxone Inj IP 0.4mg/ ml [51]	51	0	0	0	0	0	0	0
72	Prilidoxime Chloride Injection IP 25 mg/ml / 500 mg [52]	52	100	0	0	0	0	50	2013
73	Acetylstyristine Solution USP (Injection) 200 mg/ ml [500]	500	200	0	0	0	0	200	4490
74	Carbamazepine Tab IP 200 mg (Film Coated) I [53]	53	6000	4000	4000	0	4000	4000	3618
75	Carbamazepine Tab IP 100 mg (Film Coated) I [54]	54	1000	0	0	0	0	0	0
76	Phenobarbitone Tab IP 30 mg [56]	56	2000	0	0	0	0	1000	220
77	Phenytoin Injection BP 50mg/ml [57]	57	5000	3000	0	0	0	2000	6378
78	Phenytoin Oral suspension IP 25mg/ml [58]	58	10	0	0	0	0	0	0

S.No.	Drug Name	Drug Code	Demand 20_21	IncidentQty 20_21	ReceivedfromDDW 20_21	LocalPurchaseQty 20_21	Total Rec Qty	Demand Qty 21_22	Demand Value 21_22
79	Phenytoin Tab IP 100 mg (Film Coated) [59]	59	20000	12000	12000	0	12000	10000	2424
80	Sodium Valproate Inj 100 mg/ ml [60]	60	50	0	0	0	0	30	780
81	Sodium Valproate Gastro resistant Tablets IP 200 mg [61]	61	5000	3000	3000	0	3000	4000	2760
82	Phenobarbitone Inj IP 200mg/ml [420]	420	50	0	0	0	0	20	280
83	Carbamazepine Oral Suspension USP 100 mg/5ml [474]	474	0	0	0	0	0	0	0
84	Sodium Valproate Oral Solution IP 200 mg / 5 ml [479]	479	0	0	0	0	0	0	0
85	Sodium Valproate Tablet(Gastro Resistant) IP 500mg [661]	661	10000	11000	12800	0	12800	10000	15298
86	Clobazam Tablet/ Capsule 5 mg [662]	662	1000	5000	3000	0	3000	1000	630
87	Clobazam Tablet/ Capsule 10 mg [663]	663	5000	1000	0	0	0	1000	880
88	Levetiracetam Tablet IP 500 mg [664]	664	10000	0	0	0	0	10000	26000
89	Levetiracetam Oral Solution/Suspension 100mg/ml [665]	665	40	0	0	0	0	20	1900
90	Levetiracetam Injection 500mg/5ml [666]	666	100	0	0	0	0	20	569
91	Gabapentine Tablet/ Capsule 100mg [667]	667	0	0	0	0	0	0	0
92	Gabapentine Tablet/ Capsule 300mg [668]	668	20000	10000	10000	0	10000	5000	5400
93	Lamotrigine Tablet IP 50 mg (Each Sustained Release Tablet contains Lamotrigine IP 50 mg) [701]	701	1000	0	0	0	0	1000	0

Date: 20/07/2021
 By: [Signature]
 For: [Signature]

S.No.	Drug Name	Drug Code	Demand 20_21	IndentQty 20_21	ReceivedfromDDW 20_21	LocalPurchaseQty 20_21	Total Rec Qty	Demand Qty 21_22	Demand Value 21_22
94	Divalproex Extended Release Tablet IP 250 mg (Each Extended Release Film Coated Tablet contains Divalproex Sodium IP Equivalent to Valproic acid 250 mg) [702]	702	1000	500	0	0	0	2000	2916
95	Oxcarbazepine Tablet IP 150 mg (Each Film Coated Tablet contains Oxcarbazepine IP 150 mg) [703]	703	1000	0	0	0	0	1000	1350
-96	Lacosamide Tablet 100 mg (Each Film Coated Tablet contains Lacosamide 100 mg) [704]	704	0	0	0	0	0	1000	5900
97	Topiramate Tablet IP 25 mg (Each Film Coated Tablet contains Topiramate IP 25 mg) [705]	705	1000	0	0	0	0	5000	8810
98	Acyclovir Oral Suspension IP 400mg/5ml [62]	62	20	0	0	0	0	0	0
99	Acyclovir Tab IP 200 mg [63]	63	5000	8000	0	0	0	3000	2203
100	Acyclovir Tab IP 800 mg [64]	64	40000	35000	0	0	0	30000	106200
101	Albendazole Oral suspension IP 400 mg/10ml [65]	65	1200	0	0	0	0	600	2070
102	Albendazole Tablets IP 400 mg(Detail in RC) I [66A]	66A	16000	1000	1000	0	1000	4000	5068
103	Amikacin Inj IP 100 mg [67]	67	3000	0	0	0	0	400	1880
104	Amikacin Inj IP 500 mg [68]	68	40000	0	0	0	0	20000	269200

S.No.	Drug Name	Drug Code	Demand 20_21	IndentQty 20_21	ReceivedfromDDW 20_21	LocalPurchaseQty 20_21	Total Rec Qty	Demand_Qty 21_22	Demand Value 21_22
105	Amoxicillin and Cloxacillin Cap 250 + 250 mg [69]	69	5000	0	0	0	0	0	0
106	Amoxicillin and Potassium Clavulanate Tabs IP 500 mg + 125 mg [70]	70	400000	40000	60000	0	60000	300000	1167000
107	Amoxicillin Cap IP 250mg [71]	71	15000	0	0	0	0	2000	1388
108	Amoxicillin Cap IP 500mg [72]	72	30000	0	0	0	0	10000	14600
109	Amoxicillin Dispersible Tablets IP 125 mg [73]	73	4000	0	0	0	0	0	0
110	Amphotericin B Inj IP 50 mg [74]	74	500	0	0	0	0	10	1300
111	Ampicillin Injection IP 500 mg [75]	75	100	0	0	0	0	0	0
112	Azithromycin Tab 100 mg Dispersible Tabs (3 tab strip 10x3x3) [78A]	78A	9000	0	0	0	0	4500	4284
113	Azithromycin Tablets IP 250mg [79A]	79A	18000	2000	0	0	0	6000	14967
114	Azithromycin Tab IP 500 mg [80A]	80A	90000	22000	10800	0	10800	90000	449000
115	Benzathine Benzylpenicillin Inj IP 12 lac units [81]	81	0	0	0	0	0	0	0
116	Benzathine Benzylpenicillin Inj IP 6 lac units [82]	82	0	0	0	0	0	0	0
117	Cefixime Tab IP 100 mg [84]	84	150000	0	0	0	0	30000	35385
118	Cefixime Tab IP 200 mg [85]	85	500000	40000	40500	0	40500	250000	561000
119	Cefoperazone and Sulbactam for Inj (Cefoperazone Sodium eq.to Cefoperazone 1gm and Sulbactam Sodium	86	3000	1000	1000	0	1000	1500	28500



 ११/११/२०२१

 ११/११/२०२१

S.No.	Drug Name	Drug Code	Demand 20_21	IndentQty 20_21	ReceivedfromDDW 20_21	LocalPurchaseQty 20_21	Total Rec Qty	Demand Qty 21_22	Demand Value 21_22
	eq to Sulbactam 0.5gm) (IM/IV use) [86]								
120	Cefotaxime Injection IP 1 g [87]	87	3000	0	0	0	0	1000	10400
121	Cefotaxime Inj IP 250 mg [88]	88	2000	0	0	0	0	1000	4880
122	Cefazidime Inj IP 1g l 89]	89	0	0	0	0	0	0	0
123	Cefazidime Inj IP 250 mg [90]	90	0	0	0	0	0	0	0
124	Cefazidime Inj IP 500 mg [91]	91	0	0	0	0	0	0	0
125	Ceftriaxone Inj IP 1g/ vial [93]	93	80000	20000	15000	0	15000	40000	450000
126	Ceftriaxone Inj IP 250 mg/vial [94]	94	1000	0	0	0	0	500	2460
127	Ceftriaxone Inj IP 500mg/vial [95]	95	4000	0	0	0	0	2000	13300
128	Cephalexin Cap IP 250 mg [96]	96	6000	0	0	0	0	2000	2680
129	Cephalexin Cap IP 500 mg [97]	97	20000	0	0	0	0	6000	14280
130	Chloroquine Phosphate Inj IP 40 mg/ ml [98]	98	0	0	0	0	0	0	0
131	Chloroquine Phosphate Tab. IP 250mg Eq to 155 mg of Chloroquine base Film Coated [99]	99	6000	0	0	0	0	3000	1317
132	Chloroquine Phosphate Suspension IP 50 mg/ 5ml [100A]	100A	20	0	0	0	0	0	0
133	Ciprofloxacin Injection IP 200mg/100ml [101]	101	3000	500	250	0	250	1000	6100
134	Ciprofloxacin Tablets IP 250 mg Film Coated [102]	102	10000	6000	3000	0	3000	6000	4020
135	Ciprofloxacin Tablet IP 500 mg Film Coated [103]	103	60000	0	0	0	0	20000	24900

S.No.	Drug Name	Drug Code	Demand 20_21	IndentQty 20_21	ReceivedfromDDW 20_21	LocalPurchaseQty 20_21	Total Rec Qty	Demand Qty 21_22	Demand Value 21_22
	103]								
136	Clotrimazole Cream IP 2% w/w [104]	104	30000	6000	2500	0	2500	10000	52700
137	Clotrimazole Vaginal Tab IP 500mg [105]	105	6000	2000	2000	0	2000	2000	12800
138	Co-trimoxazole oral suspension IP Each 5 ml contains Trimethoprim 40 mg and Sulphamethoxazole 200 mg [107]	107	0	0	0	0	0	0	0
139	Co-trimoxazole Tablets IP Trimethoprim 40 mg and Sulphamethoxazole 200 mg [108]	108	0	0	0	0	0	0	0
140	Diethylcarbamazine Tab IP 100 mg [110]	110	0	0	0	0	0	0	0
141	Doxycycline Cap IP 100 mg [111]	111	120000	135000	0	0	0	120000	69540
142	Fluconazole Tablets IP 150mg [114A]	114A	60000	42000	0	0	0	20000	22480
143	Gentamycin Injection IP 80mg/2ml (IM/ IV use) [116]	116	10000	0	0	0	0	500	1425
144	Griseofulvin Tab IP 125 mg [117]	117	60000	41800	11850	0	11850	30000	23100
145	Itraconazole Cap 100 mg [118]	118	800000	182500	146000	0	146000	400000	744000
146	Meropenem Inj IP 500 mg [119]	119	1000	2440	1000	0	1000	400	21184
147	Metronidazole Inj IP 500 mg/100ml [120]	120	40000	0	0	0	0	20000	109400
148	Metronidazole Benzoate Oral Suspension IP 100 mg of base/5ml [121]	121	0	0	0	0	0	0	0
149	Metronidazole Tablets IP 200 mg (Film Coated) [122]	122	10000	3000	3000	0	3000	5000	1413
150	Metronidazole Tablets	123	80000	30000	30000	0	30000	40000	18920

RECEIVED
 13/04/2022
 H.S. Jadhav
 Asst. Commr. (M)
 Mumbai

S.No.	Drug Name	Drug Code	Demand 20_21	IndentQty 20_21	ReceivedfromDDW 20_21	LocalPurchaseQty 20_21	Total Rec Qty	Demand Qty 21_22	Demand Value 21_22
	IP 400 mg (Film Coated) [123]								
151	Norfloxacin Tab IP 400mg Film Coated [124]	124	30000	10000	20000	0	20000	10000	10143
152	Ofloxacin Tab IP 200 mg [125]	125	60000	15000	12500	0	12500	20000	10040
153	Primaquine Tab IP 2.5 mg [128]	128	500	0	0	0	0	100	18
154	Primaquine Tab IP 7.5 mg [129]	129	1000	0	0	0	0	200	65
155	Quinine Dihydrochloride Inj IP 300 mg/ml [131]	131	0	0	0	0	0	0	0
156	Quinine Sulphate Tablets IP 300 mg (Film Coated) [132]	132	0	0	0	0	0	0	0
157	Ampicillin Cap IP 500mg [412]	412	0	0	0	0	0	0	0
158	Nitrofurantoin Tab IP 100mg [413]	413	10000	0	0	0	0	5000	3350
159	Cloxacillin Sodium Inj IP 500mg [417]	417	100	0	0	0	0	0	0
160	Cephalexin Oral Suspension IP (Cephalexin Dry Syrup IP) 125mg/ 5 ml [427]	427	0	0	0	0	0	0	0
161	Ofloxacin Oral Suspension IP 50mg/ 5ml [428]	428	700	0	0	0	0	200	1042
162	Timidazole Tab IP 300 mg (Film Coated) [430]	430	0	0	0	0	0	0	0
163	Timidazole Tab IP 500 mg (Film Coated) [431]	431	0	0	0	0	0	0	0
164	Piperacillin + Tazobactam for Injection IP 4gm+500mg [468]	468	6000	22900	5100	0	5100	4000	221240
165	Amoxicillin Oral Suspension IP (Dry	473	1200	0	0	0	0	500	2800

S.No.	Drug Name	Drug Code	Demand 20_21	IndentQty 20_21	ReceivedfromDDW 20_21	LocalPurchaseQty 20_21	Total Rec Qty	Demand Qty 21_22	Demand Value 21_22
	syrup) 125 mg/5ml [473]								
166	Cefpodoxime Dispersible Tab 50 mg [475]	475	10000	5000	5000	0	5000	4000	3980
167	Cephalexin Tablets 125 mg (Dispersible Tablets) [476]	476	0	0	0	0	0	0	0
168	Meropenem Inj. IP 1gm [481]	481	2000	15700	11080	0	11080	3000	315360
169	Acyclovir Intravenous Infusion IP 250mg [502]	502	0	0	0	0	0	0	0
170	Acyclovir Intravenous Infusion IP 500mg [503]	503	20	0	0	0	0	2000	18700
171	Amikacin Inj IP 250 mg [504]	504	5000	0	0	0	0	2000	27560
172	Amoxicillin and Potassium Clavulanic IP Inj 600mg [505]	505	4000	1000	1000	0	1000	8000	204800
173	Amoxicillin and Potassium Clavulanate Inj IP 1.2gm [506]	506	20000	5120	1536	0	1536	3000	38580
174	Amoxicillin and Potassium Clavulanate oral suspension Ip 200 mg +28.5 mg/5 ml (30ml Bottle) [507]	507	5000	1000	1200	0	1200		
175	Artesunate Injection 60 mg (L.M. I.V. USE) Each Combo Pack contains Artesunate Injection 60 mg Vial, Sodium Bicarbonate Injection IP 5 o/o w/v (1ml ampoule), Sodium chloride Injection IP 0.9o/o w/v (5ml ampoule) [508A]	508A	4000	0	0	0	0	1000	10650
176	Aztreonam Injection USP 500 mg [509]	509	0	0	0	0	0	0	0

RECEIVED
 17/06/2022
 10:10 AM
 17/06/2022
 10:10 AM
 17/06/2022
 10:10 AM

S.No.	Drug Name	Drug Code	Demand 20_21	IndentQty 20_21	ReceivedfromDDW 20_21	LocalPurchaseQty 20_21	Total Rec Qty	Demand Qty 21_22	Demand Value 21_22
177	Cefepime Injection IP 500 mg [510]	510	0	0	0	0	0	0	0
178	Cefixime Oral Suspension IP 25mg/ml (Paediatric Drops) [511]	511	1000	0	0	0	0	400	4360
179	Cefuroxime Axetil Tab IP 250 mg [512]	512	30000	16000	0	0	0	10000	25200
180	Clindamycin Capsule IP 150mg [513]	513	0	0	0	0	0	0	0
181	Clindamycin Capsule Ip 300 mg [514]	514	3000	0	0	0	0	0	0
182	Levofloxacin Tablets IP 250 mg [515]	515	10000	5000	5000	0	5000	5000	3625
183	Linezolid Tablets IP 600 mg [516]	516	10000	0	0	0	0	6000	35688
184	Linezolid Inj 200mg/100ml [517]	517	3000	700	700	0	700	1000	19800
185	Mefloquine Tablets IP 250 mg [518]	518	0	0	0	0	0	0	0
186	Ofloxacin and Ornidazole Tablets Ofloxacin 200 mg and Ornidazole 500 mg [520]	520	100000	50000	34400	0	34400	30000	37200
187	Ofloxacin Infusion IP 200mg / 100 ml(in NaCl Inj) [521]	521	200	0	0	0	0	800	7200
188	Vancomycin for Intravenous Infusion IP 500 mg [523]	523	200	40	40	0	40	100	3330
189	Vancomycin For Intravenous Infusion IP 1 gm [524]	524	100	0	0	0	0	100	6510
190	Artemether and Leumefantirine Tablet (80 mg and 480 mg) [651]	651	200	0	0	0	0	0	0
191	Co-trimoxazole Tablet IP (Trimethoprim	669	0	0	0	0	0	0	0

S.No.	Drug Name	Drug Code	Demand 20_21	IndentQty 20_21	ReceivedfromDDW 20_21	LocalPurchaseQty 20_21	Total Rec Qty	Demand Qty 21_22	Demand Value 21_22
	160mg+ Sulphamethoxazole 300mg) [669]								
192	Aztreonam Injection 1gm [683]	683	0	60	60	0	60	0	0
193	Franycecin Sulphate Cream 1 o/o 30gm Pack [684]	684	600	0	0	0	0	0	0
194	Franycecin Sulphate Cream 1 o/o 100 gm pack [685]	685	50	0	0	0	0	0	0
195	Artemether and Leumefantrine Tablet (40 mg and 240 mg) [686]	686	0	0	0	0	0	0	0
196	Amoxicillin Tablet 250 mg+Calvulanic Acid 125 mg IP Each Film Coated Tab Conatin Amoxycillin Trihydrate IP 250 mg & Potassium Clavulanate IP 125 mg [706]	706	15000	10000	5000	0	5000	5000	16134
197	Piperacillin Injection 2 gm + Tazobactam 250mg IP [707]	707	1000	0	0	0	0	500	12425
198	Ceftriaxone Injection 1 gm + Tazobactam 1.25 gm [708]	708	1000	0	0	0	0	1000	0
199	Cefadroxil Dispersible Tablet 250 mg(each uncoated Dispersible tablet contain Cefadroxil equivalent to Anhydrous Cefadroxil 250 mg) [709]	709	8000	0	0	0	0	3000	0
200	Cefadroxil Tablet 500 mg [710]	710	16000	26000	5000	0	5000	5000	11850
201	Ofloxacin Oral Suspension IP (Each	711	600	0	0	0	0	600	0

Director, Government of Karnataka
 Health Department
 Bangalore
 15/05/2022

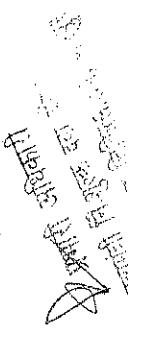
S.No.	Drug Name	Drug Code	Demand 20_21	IndentQty 20_21	ReceivedfromDDW 20_21	LocalPurchaseQty 20_21	Total Rec Qty	Demand Qty 21_22	Demand Value 21_22
	5ml contains Ofloxacin IP 100 mg) 30 ml Size [711]								
202	Levofloxacin Tablet IP 500 mg (Each Film Coated Tablet contains Levofloxacin Hemihydrate IP 500 mg) [712]	712	30000	0	0	0	0	15000	23018
203	Faropenem Tablet Sodium 200 mg (Each Film Tablet contains Faropenem Sodium equivalent to Faropenem Sodium 200 mg) [713]	713	10000	0	0	0	0	0	0
204	Clindamycin phosphate Injection IP 300 mg [714]	714	1000	0	0	0	0	200	2482
205	Imipenem + Cilastatin Injection 500mg/500mg IP Powder for Solution [715]	715	1000	4	4	0	4	500	63975
206	Polymixin Sulphate B Injection USP 5 Lac IU. [716]	716	2000	0	0	0	0	800	102720
207	Meropenem Injection IP 250 mg [717]	717	600	0	0	0	0	200	5400
208	Colistimethate Injection IP 1M IU Powder for Solution [718]	718	0	0	0	0	0	0	0
209	Liposomal Amphotericin B Injection 10 mg [719]	719	1000	0	0	0	0	800	0
210	Voriconazole Injection 200mg/Vial [720]	720	800	0	0	0	0	400	0
211	Terbinafine Hydrochloride Tablet 250 mg [721]	721	12000	21000	10000	0	10000	10000	21030
212	Valganciclovir Tablet 450 mg [722]	722	2000	0	0	0	0	0	0

S.No.	Drug Name	Drug Code	Demand 20_21	IndentQty 20_21	ReceivedfromDDW 20_21	LocalPurchaseQty 20_21	Total Rec Qty	Demand_Qty 21_22	Demand Value 21_22
213	Entecavir Tablet IP 0.5 mg (Each Film Coated Tablet contains Entecavir IP 0.5 mg) [723]	723	0	0	0	0	0	0	0
214	Ganciclovir Sodium Injection 500mg (lyophilized powder for reconstitution) [724]	724	700	0	0	0	0	0	0
215	Azathioprine Tab IP 50 mg [133]	133	3000	2000	2000	0	2000	1000	1200
216	Bleomycin Injection IP 15mg (Bleomycin Sulphate Injection 15 units) [134]	134	0	0	0	0	0	0	0
217	Chlorambucil Tab IP 5 mg [136]	136	0	0	0	0	0	0	0
218	Cisplatin Inj IP 50 mg/ 50 ml [137]	137	0	0	0	0	0	0	0
219	Cyclophosphamide Inj IP 200 mg [138]	138	0	0	0	0	0	0	0
220	Cyclophosphamide Inj IP 500 mg [139]	139	0	0	0	0	0	0	0
221	Cytarabine Injection BP 500mg [141]	141	0	0	0	0	0	0	0
222	Danazol Cap IP 50 mg [142]	142	0	0	0	0	0	0	0
223	Daurorubicin Inj IP 20 mg [143]	143	0	0	0	0	0	0	0
224	Doxorubicin Inj IP 50 mg/25 ml [144]	144	0	0	0	0	0	0	0
225	Etoposide Inj IP 100 mg [146]	146	0	0	0	0	0	0	0
226	Fluorouracil Inj IP 250 mg/ 5ml [148]	148	0	0	0	0	0	0	0
227	L-Asparaginase Inj 10000 IU [149]	149	0	0	0	0	0	0	0
228	Leucovorin Calcium Inj	150	0	0	0	0	0	0	0

मार्गदर्शक
राज्य स्वास्थ्य विभाग
असम

S.No.	Drug Name	Drug Code	Demand 20_21	IndentQty 20_21	ReceivedfromDDW 20_21	LocalPurchaseQty 20_21	Total Rec Qty	Demand Qty 21_22	Demand Value 21_22
	IP / Calcium Folate Inj IP 10 mg/ml [150]								
229	Melphalan Tab IP 5 mg [151]	151	0	0	0	0	0	0	0
230	Mercaptopurine Tab IP 50 mg [152]	152	0	0	0	0	0	0	0
231	Methotrexate Inj IP 50 mg/2 ml [153]	153	0	0	0	0	0	0	0
232	Methotrexate Tab IP 2.5 mg [154]	154	2000	1000	1000	0	1000	2000	1200
233	Paclitaxel Inj IP 260 mg [155]	155	0	0	0	0	0	0	0
234	Paclitaxel Inj IP 100 mg [156]	156	0	0	0	0	0	0	0
235	Tamoxifen Tab IP 10 mg [157]	157	0	0	0	0	0	0	0
236	Vinblastine Inj IP 10mg/10ml [158]	158	0	0	0	0	0	0	0
237	Vincristine Inj IP 1mg(vial)/Vincristin Injection USP 1mg/ml (Amp) l [159]	159	0	0	0	0	0	0	0
238	Alpha Interferon Injection Interferon Alpha 2 concentrated Solution IP 3 Million Unit [525]	525	0	0	0	0	0	0	0
239	Carboplatin Injection IP 150 mg [526]	526	0	0	0	0	0	0	0
240	Carboplatin Injection IP 450 mg [527]	527	0	0	0	0	0	0	0
241	Cisplatin Inj IP 10 mg/10 ml [528]	528	0	0	0	0	0	0	0
242	Dacarbazine Injection 500 mg USP/ BP [529]	529	0	0	0	0	0	0	0
243	Filgrastim Injection IP (Granulocyte Colony Stimulating Factor) (SC/IV use) 300 mcg [530]	530	0	0	0	0	0	0	0

S.No.	Drug Name	Drug Code	Demand 20_21	IndentQty 20_21	ReceivedfromDDW 20_21	LocalPurchaseQty 20_21	Total Rec Qty	Demand_Qty 21_22	Demand_Value 21_22
244	Gencitabine for Injection 200 mg [531]	531	0	0	0	0	0	0	0
245	Gencitabine for Injection IP 1gm [532]	532	0	0	0	0	0	0	0
246	Hofamide Injection IP/ BP/USP 1gm [533]	533	0	0	0	0	0	0	0
247	Imatinib Tab IP 400mg [534]	534	200	0	0	0	0	0	0
248	Methotrexate Tablets IP 10 mg [536]	536	0	0	0	0	0	0	0
249	Mitomycin Injection IP 10 mg/Mitomycin for Injection USP 10 mg [537]	537	0	0	0	0	0	0	0
250	Oxaliplatin Injection USP 50 mg [538]	538	0	0	0	0	0	0	0
251	Cyclosporin Capsule USP/IP 50 mg [677]	677	0	0	0	0	0	0	0
252	Procabazine Hydrochloride Capsule USP 50 mg (Each Capsule contains Procabazine Hydrochloride USP 50 mg) [725]	725	0	0	0	0	0	0	0
253	Bendamustine Injection 100 mg [726]	726	0	0	0	0	0	0	0
254	Capecitabine Tablet IP 500 mg (Each Film Coated Tablet contains Capecitabine IP 500 mg) [727]	727	1000	0	0	0	0	0	0
255	Letrozole Tablet IP 2.5 mg (Each Film Coated Tablet contains Letrozole IP 2.5 mg) [728]	728	3000	0	0	0	0	0	0
256	Temozolomide Capsule IP 100 mg (Each hard	729	0	0	0	0	0	0	0



 Signature: [Handwritten Name]

 Stamp: [Circular Stamp with Text]

S.No.	Drug Name	Drug Code	Demand 20_21	IndentQty 20_21	ReceivedfromDDW 20_21	LocalPurchaseQty 20_21	Total Rec Qty	Demand_Qty 21_22	Demand_Value 21_22
	Gelatin Capsule contains Temozolomide IP 100mg) [729]								
257	Bortezomib Injection 2mg [730]	730	0	0	0	0	0	0	0
258	Abiraterone Acetate Tablet IP 250 mg (Each Uncoated Tablet contains Abiraterone Acetate IP 250 mg) [731]	731	0	0	0	0	0	0	0
259	Lomustine Capsule IP 40 mg (Each Capsule contains Lomustine IP 40 mg) [732]	732	0	0	0	0	0	0	0
260	Thalidomide Capsule USP 100 mg (Each Hard Gelatin Capsule contains Thalidomide USP 100 mg) [733]	733	0	0	0	0	0	0	0
261	Bevacizumab Injection 400 mg [734]	734	0	0	0	0	0	0	0
262	Bevacizumab Injection 100 mg [735]	735	0	0	0	0	0	0	0
263	Cyclophosphamide Tablet IP 50 mg (Each Sugar Coated Tablet contains Cyclophosphamide IP 53.5 mg equivalent to Anhydrous Cyclophosphamide 50 mg) [736]	736	0	0	0	0	0	0	0
264	Gefitinib Tablet IP 250 mg (Each Film Coated Tablet contains Gefitinib IP 250 mg) [737]	737	1000	0	0	0	0	0	0
265	Mycofenolate mofetil Capsule IP 250 mg (Each Capsule Contains	738	0	0	0	0	0	0	0

21

S.No.	Drug Name	Drug Code	Demand 20_21	IndentQty 20_21	ReceivedfromDDW 20_21	LocalPurchaseQty 20_21	Total Rec Qty	Demand Qty 21_22	Demand Value 21_22
266	Mycophenolate mofetil IP 250 mg) [738] Tacrolimus Capsule IP 0.5 mg (Each Hard Gealfin Capsule Tacrolimus IP 0.5 mg) [739]	739	0	0	0	0	0	0	0
267	Mycophenolate Sodium Tablet 360 mg (Each Enteric Coated tablet Conatin Mycophenolate Sodium 360 mg) [740]	740	0	0	0	0	0	0	0
268	Bicalutamide Tablet IP 50 mg (Each Film Tablet contains Bicalutamide IP 50 mg) [741]	741	0	0	0	0	0	0	0
269	6 Thioguanine Tablet USP 40 mg (Each Uncoated Tablet contains 6 Thioguanine USP 40 mg) [742]	742	0	0	0	0	0	0	0
270	Zoledronic acid Injection IP 4mg/100ml 100ml Size [743]	743	0	0	0	0	0	0	0
271	Dacatinib TAB 100 mg [797]	797	0	0	0	0	0	0	0
272	Levodopa and Carbidopa Tablets IP Levodopa 100 mg + Carbidopa 10 mg [160]	160	0	0	0	0	0	1000	1420
273	Levodopa and Carbidopa Tab 250 mg+ 25 mg [161]	161	0	0	0	0	0	0	0
274	Trihexyphenidyl HCl Tab IP 2 mg [162]	162	20000	0	0	0	0	15000	1874
275	Bromocriptine Tablets IP 2.5 mg [540]	540	0	0	0	0	0	0	0
276	Acenocoumarol Tab IP/ Nicoumalone Tab IP 2	163	0	0	0	0	0	0	0

RECEIVED
 01/08/2022
 01/08/2022
 01/08/2022

S.No.	Drug Name	Drug Code	Demand 20_21	IndentQty 20_21	ReceivedfromDDW 20_21	LocalPurchaseQty 20_21	Total Rec Qty	Demand Qty 21_22	Demand Value 21_22
	mg [163]								
277	Deferasirox Tab 100 mg [165]	165	0	0	0	0	0	0	0
278	Deferasirox Tab 500 mg [166]	166	0	0	0	0	0	0	0
279	Deferiprone Cap 250 mg [167]	167	0	0	0	0	0	0	0
280	Deferiprone Cap 500 mg [168]	168	0	0	0	0	0	0	0
281	Desferrioxamine Injection IP 500 mg / Vial (For I.M. Inj and I.V S.C. Infusion) [169]	169	0	0	0	0	0	0	0
282	Dried Human Anti haemophilic Fraction IP (Dried Factor VIII Fraction IP) 250 IU/ Vial (IV use) [171]	171	0	0	0	0	0	0	0
283	Enoxaparin Sodium Inj IP 60 mg [172]	172	8000	14260	2285	4200	6485	600	53940
284	Ethamsylate Inj 250 mg/ 2ml (IM/IV) [173]	173	4000	0	0	0	0	2000	5400
285	Heparin Sodium Inj IP 5000 IU/ml (IM/IV use) [174]	174	30	80	70	0	70	50	3780
286	Human Albumin Solution IP 20% [175]	175	2000	250	250	0	250	2000	6488000
287	rh-Erythropoetin Inj IP 10000 IU [176]	176	0	0	0	0	0	0	0
288	rh-Erythropoetin Inj IP 2000IU [177]	177	0	0	0	0	0	0	0
289	rh-Erythropoetin Inj 4000 IU [179]	179	0	0	0	0	0	0	0
290	Vitamin K Injection Each ml Contains Menaquinone Sodium Bisulphite 10mg Equivalent to 5.2 mg of Menaquinone (Aqueous	180	200	0	0	0	0	200	636

23

S.No.	Drug Name	Drug Code	Demand 20_21	IndentQty 20_21	ReceivedfromDDW 20_21	LocalPurchaseQty 20_21	Total Rec Qty	Demand Qty 21_22	Demand Value 21_22
291	Solution) [180] Polygeline 3.5% Solution with electrolytes for I.V. Infusion [405]	405	120	20	20	0	20	60	12000
292	Factor IX Concentrate (Purified) IP 600 IU (Human Coagulation Factor IX) [406]	406	0	0	0	0	0	0	0
293	Anti Inhibitor Coagulation Complex (Human Plasma Protein with a Factor VIII Inhibitor Bypassing Activity of 500 I.U. per Vial) [407]	407	0	0	0	0	0	0	0
294	Hydroxyethyl Starch (130/0.4) 6 o/o w/v with Sodium Chloride 0.9 o/o w/v Intravenous Infusion / Balanced Electrolyte solution of sodium chloride, sodium acetate, potassium chloride, magnesium chloride Intravenous Infusion [416]	416	240	120	120	0	120	480	61920
295	Tranexamic Acid Tablets IP/BP 500 mg [545]	545	60000	20000	10000	0	10000	15000	47585
296	Warfarin Sodium. Tab IP 5mg [546]	546	0	0	0	0	0	0	0
297	Vitamin K-1 (Phytomenadione) IP 1mg/0.5ml injection (Detail in RC) [644]	644	3000	90	90	0	90	1500	16500
298	Dried Factor VIII Fraction IP (IV use) 500 IU/Vial [688]	688	0	0	0	0	0	0	0
299	Dried Factor VIII	689	0	0	0	0	0	0	0

APPROVED

 23

S.No.	Drug Name	Drug Code	Demand 20_21	Indent Qty 20_21	Received from DDW 20_21	Local Purchase Qty 20_21	Total Rec Qty	Demand Qty 21_22	Demand Value 21_22
	Fraction IP (IV use) 1000 IU/Vial [689]								
300	Recombinant Coagulation Factor VIIa 1mg [690]	690	0	0	0	0	0	0	0
301	Recombinant Coagulation Factor VIIa 2mg [691]	691	0	0	0	0	0	0	0
302	n Butyl Alcohol Injection 0.26mg/5ml, Citric Acid 2.5mg/5ml and Sod Chloride Solution 5 ml Size [744]	744	0	0	0	0	0	0	0
303	Ethamsylate Tablet 500 mg (Each Uncoated Coated Tablet contains Ethamsylate 500 mg) [745]	745	50000	20000	0	0	0	30000	15150
304	Feracryluna 1% w/w Sterile Solution 100 ml [746]	746	200	0	0	0	0	50	0
305	Tranexamic Acid Injection IP 100mg/ml 5ml Size [747]	747	6000	2500	0	0	0	2000	17480
306	Recombinant F IX 500 IU with diluent [748]	748	0	0	0	0	0	0	0
307	3rd Generation Recombinant F VIII 250 IU with diluent [749]	749	0	0	0	0	0	0	0
308	3rd Generation Recombinant F VIII 1000 IU with diluent [750]	750	0	0	0	0	0	0	0
309	Amiodarone Tab IP 100 mg [181]	181	0	0	0	0	0	0	0
310	Amiodarone Tab IP 200 mg [182]	182	600	0	0	0	0	600	1290
311	Amiodarone	183	120	0	0	0	0	50	875

25/

S.No.	Drug Name	Drug Code	Demand 20_21	IndentQty 20_21	ReceivedfromDDW 20_21	LocalPurchaseQty 20_21	Total Rec Qty	Demand Qty 21_22	Demand_Value 21_22
	Hydrochloride Inj 50 mg /ml [183]								
312	Amlodipine Tab IP 2.5 mg [184]	184	20000	0	0	0	0	2000	212
313	Amlodipine Tablets IP 5 mg [185]	185	140000	50000	72000	0	72000	80000	8336
314	Atenolol Tab IP 50 mg [186]	186	160000	10000	14000	0	14000	5000	704
315	Atorvastatin Tab IP 10mg [187]	187	160000	146000	87000	0	87000	100000	20750
316	Clopidogrel Tab IP 75 mg [188]	188	10000	5000	5000	0	5000	6000	3103
317	Digoxin Inj IP 0.25 mg/ml [189]	189	0	0	0	0	0	10	58
318	Digoxin Tab IP 0.25 mg [190]	190	12000	5000	5000	0	5000	10000	4400
319	Diltiazem Tabs IP 30 mg Film Coated [191]	191	0	0	0	0	0	0	0
320	Dobutamine Inj IP 50mg /ml/250mg (Vial/)	192	100	130	150	0	150	100	1413
	Dobutamine Inj IP 250 mg/5ml(AMP) [192]								
321	Dopamine Hydrochloride Inj IP 40 mg/ml [193]	193	800	0	0	0	0	400	2740
322	Enalapril Maleate Tab IP 5mg [194]	194	0	0	0	0	0	0	0
323	Enalapril Maleate Tab IP 2.5mg [195]	195	0	0	0	0	0	0	0
324	Isosorbide dinitrate Tab IP 5 mg [197]	197	20000	0	0	0	0	12000	1787
325	Isosorbide mononitrate Tabs IP 20 mg [198]	198	50000	0	0	0	0	30000	8700
326	Lisinopril Tab IP 5 mg [199]	199	0	0	0	0	0	0	0
327	Losartan Tab IP 50 mg [200]	200	100000	90000	0	0	0	80000	26240
328	Magnesium Sulphate Inj.	201	2000	2400	900	150	1050	1000	1660

District Collector, Dindur

S.No.	Drug Name	Drug Code	Demand 20_21	IdentQty 20_21	ReceivedfromDDV 20_21	LocalPurchaseQty 20_21	Total Rec Qty	Demand_Qty 21_22	Demand_Value 21_22
	IP 500mg/ml (50%w/v) [201]								
329	Methyldopa Tab IP 250mg Film Coated I 2021	202	600	0	0	0	0	0	0
330	Nifedipine Cap IP 5mg I 2031	203	5000	0	0	0	0	3000	870
331	Nifedipine Tablets IP 10 mg (Sustained Release) [204]	204	4000	0	0	0	0	5000	1495
332	Nitroglycerin Inj 5 mg/ml [205]	205	0	0	0	0	0	20	224
333	Propranolol Tab IP 40 mg [207]	207	60000	50000	48400	0	48400	40000	9560
334	Streptokinase Injection 15 lac units IP [209]	209	20	0	0	0	0	10	6800
335	Verapamil Tab IP 40 mg Film Coated [211]	211	0	0	0	0	0	0	0
336	Labetalol Tab IP 100mg [410]	410	20000	0	0	0	0	8000	10132
337	Labetalol HCl Inj IP 20mg/4ml [411]	411	2000	0	0	0	0	500	10525
338	Aspirin Delayed Release Tablet / Aspirin Gastroresistant Tab IP (Each enteric coated tablet contains acetylsalicylic acid 75 mg) [444]	444	80000	2500	2500	0	2500	60000	11134
339	Amlodipine and Enalapril Maleate Tablets (Amlodipine Besilate equivalent to Amlodipine 5 mg, Enalapril Maleate 5 mg) [457]	457	0	0	0	0	0	0	0
340	Losartan Potassium and Amlodipine Tablets IP (Losartan Potassium 50	458	30000	30000	30000	0	30000	30000	12900

S.No.	Drug Name	Drug Code	Demand 20_21	IndentQty 20_21	ReceivedfromDDW 20_21	LocalPurchaseQty 20_21	Total Rec Qty	Demand Qty 21_22	Demand_Value 21_22
341	mg, Amlodipine Besilate eq to Amlodipine 5mg) [458] Losartan Potassium and Hydrochlorothiazide Tablets IP(Losartan Potassium 50 mg, Hydrochlorothiazide 12.5 mg) [459]	459	150000	95000	0	0	0	100000	53000
342	Amlodipine and Lisinopril Tablets Amlodipine Besilate equivalent to Amlodipine 5 mg, Lisinopril eq to Lisinopril (anhydrous), 5 mg [460]	460	0	0	0	0	0	0	0
343	Amlodipine and Atenolol Tablet (Amlodipine Besilate Equivalent to Amlodipine 5mg, Atenolol 50mg) [461]	461	80000	20000	20000	0	20000	40000	7204
344	Atenolol Tab IP 25 mg [462]	462	6000	0	0	0	0	2000	229
345	Enalapril Maleate Tablets IP 10 mg [463]	463	0	0	0	0	0	0	0
346	Lisinopril Tablets IP 10 mg [465]	465	0	0	0	0	0	0	0
347	Lisinopril Tab IP 2.5 mg [466]	466	0	0	0	0	0	0	0
348	Losartan Tab IP 25 mg [467]	467	6000	6000	0	0	0	3000	913
349	Adenosine Injection IP 6 mg/2ml [547]	547	300	0	0	0	0	100	1566
350	Atorvastatin Tablets IP 40 mg [548]	548	30000	0	0	0	0	20000	13796
351	Clopidogrel and Aspirin Tables, Clopidogrel 75 mg and Aspirin 75 mg [549]	549	60000	0	0	0	0	42000	28010

DECLARATION BY THE USER
I hereby declare that the above information is true and correct.
Signature
Date: _____

S.No.	Drug Name	Drug Code	Demand 20_21	IndentQty 20_21	ReceivedfromDDW 20_21	LocalPurchaseQty 20_21	Total Rec Qty	Demand Qty 21_22	Demand Value 21_22
	549]								
352	Fenofibrate Capsules/ Tab IP 200 mg [550]	550	3000	2000	2000	0	2000	2000	2880
353	Isoprenaline Injection IP 2mg / ml [551]	551	0	0	0	0	0	0	0
354	Metoprolol Tablets IP 25 mg [552]	552	40000	35000	37000	0	37000	20000	3380
355	Metoprolol Succinate Extended Release Tablets IP 50 mg [553]	553	60000	30000	30000	0	30000	30000	14670
356	Noradrenaline Injection IP 2 mg/ml [554]	554	2000	900	500	0	500	1000	6750
357	Prazosin Tablets (Extended Release) 2.5 mg [555]	555	0	0	0	0	0	0	0
358	Telmisartan Tablets IP 40 mg [556]	556	30000	73000	30000	0	30000	15000	6638
359	Urokinase Injection 5 Lac Unit (Lyophilized) I 557]	557	0	0	0	0	0	0	0
360	Ramipril Tablets IP 2.5 mg [636]	636	70000	20000	20000	0	20000	50000	12500
361	Glyceryl Trinitrate Tablets 2.6 mg Controlled Release tablets [650]	650	30000	30000	15000	0	15000	20000	25927
362	Clonidine Hydrochloride Tablet IP 0.1 mg (Each Tablet contains Clonidine Hydrochloride IP 0.1 mg) [751]	751	4000	0	0	0	0	0	0
363	Sotalol Hydrochloride Tablet USP/BP 40mg (Each Film Coated Tablet contains Sotalol Hydrochloride USP/BP 40mg) [752]	752	5000	500	0	0	0	0	0
364	Esmolol hydrochloride Injection 10mg/ml 10ml	753	2000	0	0	0	0	0	0

29

S.No.	Drug Name	Drug Code	Demand 20_21	IndentQty 20_21	ReceivedfromDDW 20_21	LocalPurchaseQty 20_21	Total Rec Qty	Demand_Qty 21_22	Demand Value 21_22
	Size [753]								
365	Sodium Nitroprusside Injection 25mg/ml 2ml Size [754]	754	1000	0	0	0	0	50	0
366	Carvedilol Tablet 3.125 mg [755]	755	5000	4900	2000	0	2000	5000	1141
367	Rosuvastatin Tablet IP 20 mg (Each Film Coated Tablet contains Rosuvastatin Calcium IP equivalent to Rosuvastatin 20 mg) [756]	756	10000	13000	0	0	0	10000	8628
368	Rosuvastatin Tablet 10 mg [757]	757	20000	13000	0	0	0	20000	9836
369	Sacubitril 24 mg and Valsartan 26 mg Tablet [758]	758	20000	0	0	0	0	5000	224429
370	Chlorhexidine Mouthwash IP 0.2 o/o [580]	580	2000	500	480	0	480	800	3944
371	Dental Gel Choline salicylate 8.7 o/o, Benzalkonium Chloride 0.01 o/o, Lignocaine HCl 2 o/o (flavoured gel base) [581]	581	2000	600	600	0	600	500	2735
372	Tooth Gel Sodium Monofluorophosphate 0.7 o/o and Potassium Nitrate 5 o/o (in flavoured base) [582]	582	3000	1000	960	0	960	1000	8830
373	Gun Paint containing Tannic acid 2%, Centrimide 0.1%, Zinc Chloride 1% [583]	583	1000	250	250	0	250	200	1386
374	Metronidazole 1% and Chlorhexidine Gluconate 0.25% Gel [584]	584	100	0	0	0	0	0	0

Handwritten signature and stamp at the bottom right of the page.

S.No.	Drug Name	Drug Code	Demand 20_21	IndentQty 20_21	ReceivedfromDDW 20_21	LocalPurchaseQty 20_21	Total Rec Qty	Demand Qty 21_22	Demand Value 21_22
375	Compound Benzoic Acid Ointment IP Benzoic Acid 6 o/o + Salicylic Acid 3 o/o [106]	106	1000	1000	1000	0	1000	1000	4840
376	Acyclovir Cream 5% I 2131	213	200	100	100	0	100	100	444
377	Cetrimide Cream IP 15 gm [215A]	215A	0	0	0	0	0	0	0
378	Fusidic Acid Cream IP 2 % [216A]	216A	20000	11000	8800	0	8800	10000	179900
379	Glycerin IP 400 gm [217]	217	0	0	0	0	0	0	0
380	Liquid Paraffin IP 400 ml [218]	218	0	0	0	0	0	0	0
381	Miconazole Nitrate Cream IP 2% [220]	220	15000	8250	5750	0	5750	10000	42300
382	Povidone Iodine ointment 5% 15 gm [221]	221	8000	1900	2475	0	2475	6000	29940
383	Neomycin Bacitracin and Sulphacetamide Powder (Neomycin 5 mg, Bacitracin 250 units, Sulphacetamide 60 mg) [223]	223	600	100	100	0	100	400	5996
384	Silver Sulphadiazine cream IP 1% 50gm Tube [224]	224	500	0	0	0	0	100	1860
385	Geriatric Violet Topical Solution USP 1o/o [246]	246	50	20	20	0	20	30	690
386	Clotrimazole mouth paint (Clotrimazole 1 o/o w/v) [443]	443	100	0	0	0	0	0	0
387	Bedomethasone, Neomycin and Clotrimazole Cream (Beclomethasone Dipropionate 0.025 %	445	20000	1000	2000	0	2000	10000	41200

S.No.	Drug Name	Drug Code	Demand 20_21	IndentQty 20_21	ReceivedfromDDW 20_21	LocalPurchaseQty 20_21	Total Rec Qty	Demand Qty 21_22	Demand Value 21_22
	Neomycin Sulphate 0.5 % and Clotrimazole 1 %) [445]								
388	Gamma Benzene Hexachloride Lotion 1% (Lindane Lotion USP) [446]	446	300	0	0	0	0	0	0
389	Betamethasone Dipropionate Cream IP 0.05% [558]	558	4000	1000	960	0	960	2000	11300
390	Betamethasone Lotion IP 0.05 o/o [559]	559	3000	0	0	0	0	1000	6300
391	Clindamycin Phosphate Gel USP 1 o/o [560]	560	5000	2000	400	0	400	2500	24250
392	Clobetazol Propionate Cream IP 0.05 o/o [561]	561	10000	4000	800	0	800	5000	26600
393	Glycerin IP 100 ml [564]	564	840	0	0	0	0	500	6165
394	Ketoconazole cream 2% [565]	565	20000	18500	10084	0	10084	10000	59300
395	Permethrin Lotion 5% [568]	568	1200	1500	1500	0	1500	1500	11100
396	Permethrin Cream 5% [569]	569	6000	2000	0	0	0	4000	29160
397	Tretinoin cream USP 0.025% [570]	570	3000	1000	1000	0	1000	2000	13600
398	Coal tar 6% & Salicylic Acid 3% Ointment [670]	670	2000	350	350	0	350	1500	15735
399	Calamine Lotion IP 100ml [671]	671	4000	1200	1320	0	1320	1000	13990
400	Powder Clotrimazole 1 % w/w 30 gm [759]	759	6000	500	0	0	0	1000	8740
401	Terbinafine cream 1%w/w (10 gm Tube) [760]	760	8000	11000	3300	0	3300	3000	13890
402	Olopatadine Hydrochloride Ophthalmic Solution 0.1 % w/v IP (E/D) 5ml Size [761]	761	500	650	200	0	200	200	1300

18.11.2022
 31/11/2022
 0

S.No.	Drug Name	Drug Code	Demand 20_21	IndentQty 20_21	ReceivedfromDDW 20_21	LocalPurchaseQty 20_21	Total Rec Qty	Demand Qty 21_22	Demand Value 21_22
403	Orinmet Mupirocin IP 2 % [762]	762	12000	8000	4160	0	4160	6000	77940
404	Anti A Blood Grouping Serum IP(Anti A Monoclonal Serum) I [225]	225	300	150	100	0	100	150	9975
405	Anti B Blood Grouping Serum IP(Anti B Mono Clonal Serum) [226]	226	300	100	100	0	100	150	9975
406	Anti D(Rh) Blood Grouping Serum IP/Anti D Blood Grouping Serum IP [227]	227	350	150	100	0	100	150	14325
407	Diatrizoate Meglumine & Diatrizoate Sodium Inj USP 60% (iodine Conc = 292 mg/ml) [232]	232	0	0	0	0	0	0	0
408	Diatrizoate Meglumine and Diat Sod Inj USP 76 %w/v (iodine = 370 mg/ml) [233]	233	0	0	0	0	0	0	0
409	Gadodiamide Inj. 0.5mm/ml Vial [235]	235	300	0	0	0	0	100	83300
410	VDRL Anigen (with + ve and - ve control) / RPR Slide Kit [242]	242	300	2400	3000	0	3000	2000	2000
411	Iohexol USP (Solution For Injection) Non Ionic Contrast Medium in Sterile aqueous Solution 300 mg Iodine/ml [482]	482	200	200	200	0	200	200	29350
412	Iohexol USP(Solution for Injection) Non Ionic contrast medium in Sterile aqueous solution 350 mg Iodine/ml [672]	672	5000	1200	600	0	600	1000	338800
413	Diagnostic Sticks for Multiple use strip (Sugar Ketone, Albumin) [673]	673	20000	17000	0	1600	1600	20000	0

S.No.	Drug Name	Drug Code	Demand 20_21	IndentQty 20_21	ReceivedfromDDW 20_21	LocalPurchaseQty 20_21	Total Rec Qty	Demand_Qty 21_22	Demand_Value 21_22
414	Diagnostic strip for Glucose, Ketone [673A]	673A	5000	0	0	0	0	2000	0
415	Diagnostic strip for Glucose, Protein [673B]	673B	5000	0	0	0	0	2000	0
416	Povidone Iodine solution IP 5% 500 ml [222]	222	600	200	200	0	200	300	11790
417	Compound Benzoin Tincture IP [244]	244	20	3	3	0	3	0	0
418	Formaldehyde solution (34.5 Per. - 38 Per.) [245]	245	240	20	20	0	20	60	1792
419	Glutaraldehyde Solution 2% [247]	247	40	28	32	0	32	100	21060
420	Hydrogen Peroxide Solution IP 6 o/o (20 Vol) [248]	248	120	0	0	0	0	50	800
421	Lysol (Cresol with Soap Solution) IP (Cresol 50 o/o + Soap 50 o/o) [249]	249	30	14	8	0	8	20	14757
422	Povidone Iodine Scrub Solution / cleansing solution 7.5 o/o w/v Povidone Iodine (suitable for hand wash) [250]	250	200	100	50	0	50	50	2798
423	Surgical Spirit IP (500 ml) [252]	252	1200	2000	860	0	860	1200	65076
424	Chlorhexidine Gluconate Solution 5% 250 ml [447]	447	0	0	0	0	0	0	0
425	Surgical Spirit IP (100 ml) [449]	449	2000	5100	3160	0	3160	2000	24620
426	Povidone Iodine solution IP 5% 100ml bottle [450]	450	2000	0	0	0	0	400	3472
427	Povidone Iodine Ointment USP 250 gm [571]	571	100	20	20	0	20	40	2040
428	Povidone Iodine	572	5000	1000	1400	0	1400	3000	47700

S.No.	Drug Name	Drug Code	Demand 20_21	IndentQty 20_21	ReceivedfromDDW 20_21	LocalPurchaseQty 20_21	Total Rec Qty	Demand Qty 21_22	Demand Value 21_22
	Solution IP 10 % [572]								
429	Silver Sulphadiazine cream IP 1% 500 gm Jar [573]	573	30	0	0	0	0	10	1450
430	Acetazolamide Tab IP 250mg [253]	253	2000	0	0	0	0	1000	860
431	Fruzenide Tab IP 40 mg [254]	254	10000	7000	7000	0	7000	5000	1288
432	Furosemide Injection IP 10mg/ml (IM and IV use) [255]	255	7000	2500	2500	0	2500	3000	5250
433	Hydrochlorothiazide Tab IP 12.5 mg [256]	256	60000	20000	20000	0	20000	20000	3880
434	Mannitol Inj IP 20% w/v [257A]	257A	400	0	0	0	0	400	7800
435	Spirolactone Tab IP 25mg [258]	258	16000	22000	27400	0	27400	5000	3500
436	Torsemide Tab 10 IP mg [259]	259	60000	50000	36000	0	36000	20000	9267
437	Hydrochlorothiazide Tab IP 25mg [464]	464	0	0	0	0	0	0	0
438	Torsemide Inj 10 mg/ml [471]	471	0	0	0	0	0	0	0
439	Spirolactone Tablets IP 50 mg [574]	574	12000	22000	15000	0	15000	6000	8640
440	Ciprofloxacin 0.3 o/o and Dexamethasone 0.1 o/o Ear Drops	585	800	0	0	0	0	400	4244
441	Clotrimazole 1 o/o with Beclomethasone Dipropionate 0.025 o/o Ear Drops [586]	586	1000	0	0	0	0	400	3080
442	Neomycin, Polymixin B and Hydrocortisone Ear Drops Neomycin sulphate 3400 IU,	588	500	0	0	0	0	200	4974

33

S.No.	Drug Name	Drug Code	Demand 20_21	IndentQty 20_21	ReceivedfromDDW 20_21	LocalPurchaseQty 20_21	Total Rec Qty	Demand Qty 21_22	Demand Value 21_22
	Polymyxin B Sulphate 10000 IU, and Hydrocortisone 10 mg per ml Neomycin and Polymyxin B Sulfate and Hydrocortisone Otic Solution USP [588]								
443	Ceruminolytic Drops (Wax dissolving ear drops) Paradichlorobenzene 2 o/o, Benzocaine 2.7 o/o, Chlorbutol 5 o/o, Turpentine oil 15 o/o [589]	589	3000	200	360	0	360	1000	7240
444	Drotaverine Hydrochloride Inj 40 mg /2 ml [5]	5	5000	0	0	0	0	2000	4580
445	Ointment containing Lidocaine IP 3 o/o Zinc oxide IP 5 o/o, Hydrocortisone IP 0.25 o/o, Allantoin IP 0.5 o/o [219]	219	1600	1000	1000	0	1000	600	7458
446	Antacid Tablets,Formula ,Each chewable tablet contains Magnesium Trisilicate 250 mg, Dried Aluminium Hydroxide Gel 120 mg, Peppermint Oil [260A]	260A	12000	0	0	0	0	5000	711
447	Antacid Liquid,Each 5ml contains Dried Aluminium Hydroxide Gel 250 mg, Magnesium Hydroxide 250mg, Activated polydimethylsiloxane 50mg [261A]	261A	20000	3000	3000	0	3000	10000	63900
448	Bisacodyl Tab IP 5 mg [262]	262	5000	0	0	0	0	1000	190
449	Dicyclomine Tab IP 10	263	160000	100000	90000	0	90000	90000	9270

Handwritten signature and stamp at the bottom right of the page.

S.No.	Drug Name	Drug Code	Demand 20_21	IndentQty 20_21	ReceivedfromDDW 20_21	LocalPurchaseQty 20_21	Total Rec Qty	Demand Qty 21_22	Demand Value 21_22
	mg [263]								
450	Dicyclomine Inj IP 10 mg/ml [264]	264	15000	0	0	0	0	8000	11840
451	Dicyclomine Hydrochloride Oral Solution IP 10mg /5ml l [265]	265	600	100	200	0	200	200	870
452	Domperidone Suspension IP 5mg/5ml [266]	266	1600	0	0	0	0	500	1725
453	Domperidone Tab IP 10 mg [267]	267	80000	40000	40000	0	40000	50000	5050
454	Hyoscine Butylbromide Inj IP 20 mg/ml [268]	268	1500	0	0	0	0	800	5240
455	Loperamide Tab IP 2 mg [269]	269	2000	0	0	0	0	1000	141
456	Metoclopramide Inj IP 10mg/2ml [270]	270	30000	0	0	0	0	6000	8040
457	Metoclopramide Tab IP 10 mg [271]	271	6000	1000	1000	0	1000	0	0
458	Omeprazole Cap IP 20 mg [272]	272	700000	200000	150000	0	150000	500000	154550
459	Ondansetron Inj IP 2mg/ml [273]	273	50000	10000	9600	0	9600	20000	35800
460	ORS Powder IP [274]	274	36000	12000	6000	0	6000	10000	20200
461	Pantoprazole Inj 40 mg [275]	275	60000	10500	8100	0	8100	50000	202500
462	Ranitidine HCL Injection IP 50mg/2ml l [276]	276	30000	0	0	0	0	20000	28000
463	Ranitidine Tab IP 150mg Film Coated l [277]	277	700000	200000	200000	0	200000	400000	96400
464	Sodium Phosphates Eterna BP Each 100ml contains Sodium Dihydrogen phosphate Dihydrate 10 o/o Disodium Hydrogen	278	5000	0	0	0	0	2400	31104

S.No.	Drug Name	Drug Code	Demand 20_21	IndentQty 20_21	ReceivedfromDDW 20_21	LocalPurchaseQty 20_21	Total Rec Qty	Demand Qty 21_22	Demand Value 21_22
	Phosphate Dodecahydrate 8 o/o [278]								
465	Hyoscine Butyl bromide Tablets IP 10mg [414]	414	1000	0	0	0	0	600	1295
466	Drotaverine Tab IP 40 mg [415]	415	20000	0	0	0	0	10000	3400
467	Ranitidine Tab IP 300mg Film Coated [433]	433	5000	13000	5000	0	5000	5000	2480
468	Dicyclomine Hydrochloride and Activated Dimethicone suspension Each ml contains Dicyclomine Hydrochloride 10mg Activated Dimethicone 40mg [438]	438	300	0	0	0	0	100	520
469	Dicyclomine and Paracetamol Tablets Dicyclomine Hydrochloride 20 mg + Paracetamol 325 mg Tablets [439A]	439A	100000	50000	40000	0	40000	60000	16200
470	Metoclopramide Hydrochloride Syrup IP 5 mg/ 5ml [478]	478	0	0	0	0	0	0	0
471	Domperidone Oral Drops 10mg/ ml (10ml) [590]	590	500	100	0	0	0	300	2904
472	Drotaverine and Mefenamic Acid Tablets Drotaverine 80 mg and Mefenamic Acid 250 mg [591]	591	20000	20000	20000	0	20000	15000	9450
473	Lactic Acid Bacillus Tab 60 million spores [592]	592	180000	80000	80000	0	80000	120000	27600
474	Lactulose solution USP/ BP 10gm/15ml or 3.35 gm/5ml [593]	593	10000	6600	3470	0	3470	8000	246800

Government of Karnataka
 Department of Health and Family Welfare
 Bangalore

S.No.	Drug Name	Drug Code	Demand 20_21	IndentQty 20_21	ReceivedfromDDW 20_21	LocalPurchaseQty 20_21	Total Rec Qty	Demand Qty 21_22	Demand Value 21_22
475	Liquid Paraffin IP 100 ml [594]	594	1400	800	500	0	500	600	9600
476	Ondansetron Orally Disintegrating Tablets IP 4mg [595]	595	30000	30000	10000	0	10000	10000	1400
477	Pantoprazole 40mg and Domperidone 30mg SR Cap IP Pantoprazole as enteric coated pellets and Domperidone as SR Pellets [596]	596	800000	50000	54000	0	54000	500000	381100
478	Ursodeoxycholic Acid Tablets IP 300 mg [597]	597	30000	0	0	0	0	15000	100388
479	Doxylamine Succinate 20 mg & Pyridoxine Hydrochloride 20 mg Tablet (Each Enteric Coated Tablet contains Doxylamine Succinate USP 20 mg & Pyridoxine Hydrochloride IP 20 mg) [763]	763	300000	60000	0	0	0	200000	0
480	Prochlorperazine mesylate Injection 12.5mg/ml 5ml Size [764]	764	200	0	0	0	0	50	0
481	Probiotic Sachets 1 gm Size (Each Gram Sachet contains Saccharomyces Boulardii 250mg & Lactic acid Bacillus 150 million spores) [765]	765	40000	10000	0	0	0	10000	0
482	Mesalamine Tablet USP 1.2 gm Enteric Coated (Each Enteric Coated Prolonged Release Tablet Contains Mesalamine USP 1.2 gm) [766]	766	2000	0	0	0	0	0	0
483	Allopurinol Tablets IP	598	6000	0	0	0	0	4000	2200

29

S.No.	Drug Name	Drug Code	Demand 20_21	IndentQty 20_21	ReceivedfromDDW 20_21	LocalPurchaseQty 20_21	Total Rec Qty	Demand Qty 21_22	Demand Value 21_22
	100 mg [598]								
484	Hydroxychloroquine Sulphate Tablets 200mg [599]	599	5000	11500	4500	0	4500	5000	9495
485	Leflunomide Tablets IP 10mg(Film Coated) [600]	600	1000	0	0	0	0	1000	1590
486	Leflunomide Tablets IP/ USP 20mg. (Film coated) [601]	601	0	0	0	0	0	1000	1950
487	Sulfasalazine Delayed Release Tablets USP / Gastroresistant Sulfasalazine Tablets BP 500 mg [602]	602	4000	0	0	0	0	2000	4823
488	Biphasic isophane Insulin Inj IP (30 % soluble insulin and 70 % isophane insulin) inj. 40 IU/ml(R-DNA Origin) [279]	279	1500	480	480	0	480	1000	53890
489	Carbamazote Tabs IP 5 mg (Film Coated) [280]	280	5000	0	0	0	0	0	0
490	Carboprost Tromethamine Injection IP Each ml contains Carboprost 0.25 mg/ml [281]	281	1000	100	200	0	200	500	14800
491	Clomifene Tab IP 25 mg [282]	282	0	0	0	0	0	0	0
492	Clomiphene Tab IP 50 mg [283]	283	0	0	0	0	0	0	0
493	Conjugated Estrogen Tabs USP 0.625 mg. [284]	284	0	0	0	0	0	0	0
494	Dinoprostone Cream/ Gel 0.5 mg Dinoprostone in Syringe [285]	285	1500	476	476	0	476	800	128000

1. The Demand for the above drugs is for the year 2021-22.
 2. The Demand for the above drugs is for the year 2021-22.
 3. The Demand for the above drugs is for the year 2021-22.
 4. The Demand for the above drugs is for the year 2021-22.
 5. The Demand for the above drugs is for the year 2021-22.

S.No.	Drug Name	Drug Code	Demand 20_21	IndentQty 20_21	ReceivedfromDDW 20_21	LocalPurchaseQty 20_21	Total Rec Qty	Demand_Qty 21_22	Demand Value 21_22
495	Ethinylloestradiol Tabs IP 50 mcg [286]	286	0	0	0	0	0	0	0
496	Glibenclamide Tab IP 5 mg [287]	287	0	0	0	0	0	0	0
497	Gliclazide Tab IP 40 mg [288]	288	0	0	0	0	0	0	0
498	Glimepiride Tab IP 2 mg [289]	289	60000	20000	20000	0	20000	30000	4050
499	Glimepiride Tab IP 1mg [290]	290	60000	0	0	0	0	30000	3960
500	Glipizide Tab IP 5mg [291]	291	0	0	0	0	0	0	0
501	Hydroxyprogesterone Inj IP 250mg /ml [293]	293	250	0	0	0	0	100	1680
502	Isophane Insulin Inj IP 40 IU /ml [294]	294	0	0	0	0	0	0	0
503	Metformin Tab IP 500 mg(Film Coated) [295]	295	140000	60000	60000	0	60000	680000	155312
504	Norethisterone Tab IP 5 mg [296]	296	20000	17000	11000	0	11000	10000	5959
505	Pioglitazone Tab IP 15 mg [297]	297	12000	10000	10000	0	10000	6000	1439
506	Progesterone Inj 200 mg/2ml [298]	298	800	0	0	0	0	200	15590
507	Insulin Injection IP (Soluble Insulin/Neutral Insulin Injection)40 IU/ml(c-DNA origin) [300]	300	1000	850	850	0	850	1000	51180
508	Thyroxine Sodium Tablets IP 100mcg [301]	301	70000	75000	20350	0	20350	30000	9300
509	Metformin Hydrochloride(Sustained Release Tablets IP 1000 mg [451]	451	80000	70000	43000	0	43000	30000	17190
510	Glipizide and Metformin Hydrochloride Tablets USP (Glipizide 5 mg Metformin	452	0	0	0	0	0	0	0

31

S.No.	Drug Name	Drug Code	Demand 20_21	IndentQty 20_21	ReceivedfromDDW 20_21	LocalPurchaseQty 20_21	Total Rec Qty	Demand Qty 21_22	Demand Value 21_22
	Hydrochloride 500 mg.[452]								
511	Glibenclamide and Metformin Hydrochloride (SR) Tablets Glibenclamide 5 mg, Metformin Hydrochloride 500 mg (Sustained Release) [453]	453	0	0	0	0	0	0	
512	Metformin HCL (Sustained Release) and Glimpiride Tab Metformin HCL (Sustained Release) 500mg, Glimpiride 1mg [454]	454	120000	100000	70000	0	70000	80000	37120
513	Metformin Hydrochloride (Sustained Release) and Glimpiride Tablets IP (Metformin Hydrochloride)(Sustained Release) 500 mg, Glimpiride 2mg) [455]	455	120000	120000	84000	0	84000	80000	43192
514	Glimpiride, Pioglitazone and Metformin Hydrochloride (Sustained release) Tablets Each Tablet contains Glimpiride 2mg, Pioglitazone 15 mg, Metformin Hydrochloride (Sustained Release) 500 mg [456]	456	100000	0	0	0	0	60000	41340
515	Gliclazide and Metformin Tablets (Gliclazide 80 mg and Metformin HCL 500 mg) [603]	603	0	0	0	0	0	0	0

Handwritten signature and stamp at the bottom right of the page.

S.No.	Drug Name	Drug Code	Demand 20_21	IndentQty 20_21	ReceivedfromDDW 20_21	LocalPurchaseQty 20_21	Total Rec Qty	Demand Qty 21_22	Demand Value 21_22
516	Glucagon for Injection USP 1 mg/ml [6041]	604	0	0	0	0	0	0	0
517	Medroxyprogesterone acetate Tablets IP 10 mg [6051]	605	0	0	0	0	0	0	0
518	Thyroxine Tablets IP 50 mcg [607]	607	60000	30000	15000	0	15000	40000	10020
519	Ocreotide Injection 50 mcg/ml [608]	608	0	0	0	0	0	0	0
520	Insulin Glargine 3ml (100IU/ml) with 15 Insulin Syringes and needles/Cartridge 3ml (100IU/ml) with 15 needles and 1 pen per 20 cartridges [680]	680	600	700	600	0	600	500	99490
521	Tenagliptin Tablet IP 20mg [682]	682	60000	50000	40000	0	40000	30000	33300
522	Insulin Glargine 10 ml vial (100 IU/ml) with 30 Insuline syringes with Needle [693]	693	600	350	200	0	200	600	432600
523	Human Anti D Immunoglobulin Injection 300mcg (IM use) [303]	303	50	70	70	0	70	100	165000
524	Human Anti D Immunoglobulin 150 mcg [304]	304	20	0	0	0	0	20	25360
525	Human Rabies Immunoglobulin Inj 150 IU/ml [305]	305	200	70	70	0	70	100	358500
526	Rabies Vaccine Human (Cell Culture) IP (Intradermal) 2.5 IU (306)	306	2000	960	780	0	780	1000	198000
527	Rabies Vaccine Human (Cell Culture) IP (Intramuscular) 2.5 IU/ dose [307]	307	3000	160	160	0	160	2000	270000

UB

S.No.	Drug Name	Drug Code	Demand 20_21	IndentQty 20_21	ReceivedfromDDW 20_21	LocalPurchaseQty 20_21	Total Rec Qty	Demand_Qty 21_22	Demand Value 21_22
528	Snake Venum Anti Serum IP (Lyophilized) Polyvalent Anti Snake Venum, Serum Enzyme Refined. Contain purified equine globulins. 1 ml of serum neutralizes 0.6 mg of cobra venom, 0.45 mg of common krait (Bungarus) venom (Details in RC) [308]	308	300	100	0	0	0	100	22453
529	Tetanus Immunoglobulin IP 250 IU/ Vial [309]	309	50	0	0	0	0	0	0
530	Tetanus Vaccine (adsorbed) IP 5 ml vial [310]	310	2500	0	0	0	0	1000	17800
531	Rabies Antiserum IP (Equine) 300 units per ml contains equine anti-rabies immunoglobulin fragments (I.M./SC use) [408]	408	20	70	70	0	70	100	17900
532	Diphtheria Antitoxin 10000 IU [480]	480	0	0	0	0	0	0	0
533	Hepatitis B Immunoglobulin Injection IP 100 IU [767]	767	500	0	0	0	0	100	0
534	Human Immunoglobulin Inj with 12% IgM, 12% IgA, 76% IgG 100mg [798]	798	0	0	0	0	0	0	0
535	Atracurium Inj 10 mg/ml [311]	311	1000	1050	40	25	65	1000	18000
536	Glycopyrolate Inj IP 0.2 mg/ml [312]	312	2500	800	790	0	790	1000	3950
537	Midazolam Inj IP 1 mg/ml [313]	313	200	0	0	0	0	200	2400
538	Neostigmine Inj IP 0.5	314	800	0	0	0	0	400	1400

Handwritten signature and stamp at the bottom right of the page.

20

S.No.	Drug Name	Drug Code	Demand 20_21	IndentQty 20_21	ReceivedfromDDW 20_21	LocalPurchaseQty 20_21	Total Rec Qty	Demand Qty 21_22	Demand Value 21_22
	mg/ml [314]								
539	Neostigmine Tab IP 15 mg [316]	316	0	0	0	0	0	0	0
540	Succinylcholine Inj. IP 50 mg/ml (IV use) [317]	317	400	450	300	0	300	300	6720
541	Valetamine Bromide Inj 8mg / ml [318]	318	5000	2200	0	400	400	3000	12180
542	Vecuronium Bromide for Injection 4mg (Freeze Dried) [419]	419	600	650	150	0	150	600	10854
543	Chlorzoxazone, Diclofenac sodium & Paracetamol Tablets (Chlorzoxazone 250mg, Diclofenac sodium 50mg Paracetamol 325 mg) [610]	610	160000	30000	32000	0	32000	80000	43760
544	Neostigmine Injection IP 2.5mg/5ml [638]	638	800	0	0	0	0	400	4300
545	Cis Atrocium Besylate Injection 2 mg/ml in 5 ml vial [768]	768	5000	1700	0	0	0	2000	0
546	Tropicamide eye drop IP 100 [241]	241	50	0	0	0	0	0	0
547	Atropine Eye Ointment IP 1% [319]	319	100	0	0	0	0	0	0
548	Atropine Sulphate Ophthalmic Solution USP 1% [320]	320	60	0	0	0	0	50	15
549	Chloramphenicol Eye Drops IP 0.5 0/0 [321]	321	0	0	0	0	0	0	0
550	Ciprofloxacin Eye Drops IP 0.3 o/o w/v [322]	322	15000	1200	1200	0	1200	8000	17840
551	Ciprofloxacin Ophthalmic Ointment USP 0.3% [323]	323	400	100	100	0	100	200	1060
552	Hydroxypropylmethyl cellulose solution 20 mg / ml [324]	324	480	0	0	0	0	240	15588

45

S.No.	Drug Name	Drug Code	Demand 20_21	IndentQty 20_21	ReceivedfromDDW 20_21	LocalPurchaseQty 20_21	Total Rec Qty	Demand_Qty 21_22	Demand Value 21_22
553	Tobramycin and Dexamethasone Ophthalmic Suspension USP 0.3 o/o +0.1 o/o [330]	330	1000	900	600	0	600	500	4250
554	Tobramycin Eye Drops 0.3% [331] [331]	331	5000	0	0	0	0	3000	25170
555	Tobramycin Ophthalmic Ointment USP 0.3% [332]	332	300	0	0	0	0	200	2180
556	Flurbiprofen Sodium Ophthalmic Solution IP 0.03 o/o w/v [421]	421	1500	400	700	0	700	800	7160
557	Hyaluronidase Injection IP Each vial contains Hyaluronidase IP 1500 I.U. [423]	423	200	0	0	0	0	100	8240
558	Lidocaine HCl Topical Solution USP 4% [424]	424	20	0	0	0	0	10	125
559	Fluconazole Eye Drops 0.3% [425]	425	20	0	0	0	0	20	190
560	Timolol Eye Drops IP 0.5 o/o w/v [484]	484	200	0	0	0	0	100	1315
561	Homatropine Eye Drops IP 2% [485]	485	600	0	0	0	0	500	9000
562	Travoprost Eye Drops IP 0.004 o/o [486]	486	100	0	0	0	0	50	4800
563	Brimonidine Tartrate & Timolol Maleate Eye Drops 0.15% + 0.5% [487]	487	100	50	50	0	50	100	8500
564	Betaxolol Eye Drops 0.5 o/o [612]	612	0	0	0	0	0	0	0
565	Carboxymethylcellulose Eye drops IP 0.5% [613]	613	20000	7000	5000	0	5000	15000	81000
566	Phenylephrine Hydrochloride ophthalmic solution USP/	614	100	0	0	0	0	100	2345

2025-01-20 10:00 AM
 2025-01-20 10:00 AM
 2025-01-20 10:00 AM
 2025-01-20 10:00 AM

vb

S.No.	Drug Name	Drug Code	Demand 20_21	IndentQty 20_21	ReceivedfromDDW 20_21	LocalPurchaseQty 20_21	Total Rec Qty	Demand Qty 21_22	Demand Value 21_22
	Phenylephrine Eye Drops BP 5% [614]								
567	Aeydovir Eye Ointment IP 3% w/w 5gm Size I [769]	769	500	0	0	0	0	100	0
568	Eye drop Moxifloxacin 0.5% w/v Ophthalmic Solution IP 5ml Size I [770]	770	5000	1500	0	0	0	3000	12900
569	Chloramphenicol 1% w/w Eye ointment IP, 3gm Size [771]	771	500	100	0	0	0	200	1240
570	Isoxsuprine Inj IP 5 mg/ml [333]	333	100	70	0	0	0	100	588
571	Isoxsuprine Tab IP 20 mg [334]	334	5000	2000	2000	0	2000	3000	1293
572	Methylergometrine Inj IP 0.2 mg/ml [335]	335	2500	300	300	0	300	500	1602
573	Methylergometrine Tab IP 0.125 mg [336]	336	0	0	0	0	0	0	0
574	Misoprostol Tab IP 200 mcg [337]	337	20000	3500	3500	0	3500	12000	12096
575	Oxytocin Inj IP 5 IU/ml [338]	338	30000	50	50	0	50	20000	266800
576	Mifepristone Tab IP 200mg [615]	615	100	100	80	0	80	100	2250
577	Natural/Micronised Progesteron Soft gelatin Capsule 200 mg (Each Soft Gelatin Capsule contains Progesteron IP 200 mg)/Natural Micronised Progesteron Tablet 200 mg (Each Tablet contains Progesteron IP 200 mg) [772]	772	3000	1000	0	0	0	3000	15000
578	Cabergoline Tablet IP 0.5mg (Each Uncoated) [773]	773	1800	0	0	0	0	0	0

37

S.No.	Drug Name	Drug Code	Demand 20_21	IndentQty 20_21	ReceivedfromDDW 20_21	LocalPurchaseQty 20_21	Total Rec Qty	Demand_Qty 21_22	Demand Value 21_22
	Coated Tablet contains Cabergoline IP 0.5mg [773]								
579	Human Chorionic Gonadotropin Injection IP 5000 IU. [774]	774	4000	200	200	0	200	100	11235
580	Leuprolide Acetate depot 3.75 mg [775]	775	100	0	0	0	0	0	0
581	Leuprolide Acetate depot 11.25 mg [776]	776	0	0	0	0	0	0	0
582	Alprazolam Tab IP 0.25 mg [339]	339	80000	40000	40000	0	40000	30000	3561
583	Alprazolam Tab IP 0.5mg [340]	340	80000	60000	35000	0	35000	50000	5850
584	Amiripryline Tab IP 25mg Film Coated [341]	341	60000	0	0	0	0	20000	3600
585	Chlordiazepoxide Tablets IP 10mg [342]	342	10000	14000	10000	0	10000	8000	5200
586	Chlorpromazine Tablets IP 100 mg (Coated Tablet) [343]	343	0	0	0	0	0	0	0
587	Chlorpromazine Tablets IP 25 mg (Sugar Coated) [344]	344	0	0	0	0	0	0	0
588	Chlorpromazine Tablets IP 50 mg (Coated Tablets) [345]	345	0	0	0	0	0	1000	383
589	Chlorpromazine Inj. IP 25mg/ml [346]	346	0	0	0	0	0	0	0
590	Diazepam Inj IP 10mg/2ml (IM/IV use) [349]	349	700	300	300	0	300	500	1550
591	Diazepam Tab IP 5 mg [350]	350	0	0	0	0	0	0	0
592	Escitalopram Tab IP 10 mg [351]	351	50000	25000	25000	0	25000	30000	8850
593	Fluoxetine Cap IP 20 mg [352]	352	10000	3000	3000	0	3000	8000	2392

DATE: 12/12/2021
 TIME: 12:00 PM
 SIGNATURE: [Signature]

NR

S.No.	Drug Name	Drug Code	Demand 20_21	IndentQty 20_21	ReceivedFromDDW 20_21	LocalPurchaseQty 20_21	Total Rec Qty	Demand_Qty 21_22	Demand Value 21_22
594	Haloperidol Inj IP 5 mg/ml [353]	353	300	100	0	0	0	200	796
595	Haloperidol Tab IP 1.5 mg [354]	354	0	0	0	0	0	2000	650
596	Haloperidol Tab IP 5 mg [355]	355	1000	0	0	0	0	600	120
597	Imipramine Tab IP 25 mg (Coated Tab) [356]	356	5000	3000	3000	0	3000	4000	848
598	Imipramine Tab IP 75 mg (Coated) [357]	357	5000	0	0	0	0	4000	1514
599	Lithium Carbonate Tab IP 300 mg [358]	358	0	0	0	0	0	5000	2450
600	Lorazepam Inj IP 2 mg/ml [359]	359	2000	300	0	0	0	500	3553
601	Olanzapine Tab IP 5 mg [360]	360	20000	10000	15000	0	15000	15000	2670
602	Risperidone Tab 2mg [361]	361	5000	4000	3000	0	3000	6000	1014
603	Risperidone Tab 1 mg [362]	362	5000	4000	4000	0	4000	5000	825
604	Sertraline Tab IP 50 mg [363]	363	30000	30000	22000	0	22000	20000	6900
605	Trifluoperazine Tab IP 5 mg Coated [364]	364	0	0	0	0	0	0	0
606	Quetiapine Tablet IP 50mg [674]	674	0	0	0	0	0	5000	2884
607	Quetiapine Tablet IP 25mg [675]	675	0	0	0	0	0	5000	2420
608	Clonazepam Tablet 0.5 mg [678]	678	60000	15000	27000	0	27000	40000	5660
609	Levosulpiride Tablet 25 mg (Each Uncoated Tablet contains Levosulpiride 25 mg) [777]	777	5000	1000	0	0	0	4000	2030
610	Lorazepam Tablet IP 2 mg (Each Uncoated Tablet contains	778	3000	0	0	0	0	20000	0

29

S.No.	Drug Name	Drug Code	Demand 20_21	IndentQty 20_21	ReceivedfromDDW 20_21	LocalPurchaseQty 20_21	Total Rec Qty	Demand Qty 21_22	Demand Value 21_22
	Lorazepam IP 2 mg) [778]								
611	Zolpidem Tablet 5 mg [779]	779	3000	0	0	0	0	5000	0
612	Aminophylline Inj IP 25 mg/ml [365]	365	400	35	35	0	35	200	956
613	Beclomethasone Inhalation IP 200 mcg/dose [366]	366	6000	1000	1000	0	1000	4000	239560
614	Budesonide Nebulizer Suspension 0.25mg/ml [367]	367	16000	4000	4000	0	4000	8000	25496
615	Cough Syrup Each 5 ml contains Chlorpheniramine Maleate IP 3 mg, Ammonium Chloride 130 mg, Sodium Citrate 65 mg, Menthol 0.5 mg, Syrup Q.S. [368]	368	20000	10000	8400	0	8400	12000	50280
616	Ipratropium Bromide Nebulizer Solution 250 mcg/ ml [369]	369	1000	200	240	0	240	600	4770
617	Salbutamol Tablet IP 4 mg [370]	370	10000	21000	21000	0	21000	30000	2826
618	Salbutamol Inhalation 100 mcg /dose [371]	371	6000	1000	960	0	960	6000	253620
619	Salbutamol Nebuliser solution BP 5 mg/ml [372]	372	5000	500	500	0	500	4000	25600
620	Salbutamol Tab IP 2 mg [373]	373	30000	5000	0	0	0	20000	1460
621	Theophylline and Etofylline Injection (Anhydrous Theophylline 50.6mg + Etofylline 169.4 mg) [374]	374	6000	2035	1800	0	1800	4000	7296
622	Theophylline and Etofylline Tablets (375	200000	230000	84000	0	84000	150000	25800

Handwritten signature and stamp.

S.No.	Drug Name	Drug Code	Demand 20_21	IndentQty 20_21	ReceivedfromDDW 20_21	LocalPurchaseQty 20_21	Total Rec Qty	Demand_Qty 21_22	Demand Value 21_22
623	Theophylline IP 23mg + Etohylline 77 mg] [375]	376	0	0	0	0	0	0	0
624	Salbutamol Syrup IP 2mg/5ml [432]	432	3000	0	0	0	0	2000	12920
625	Dextromethorphan HBr Syrup IP 13.5mg / 5ml l 440]	440	20000	12000	3200	0	3200	16000	70240
626	Saline Nasal Solution (Drops) (Sodium chloride 0.65 g/o) [442]	442	4000	0	0	0	0	3000	9270
627	Formoterol Fumarate & Budesonide Powder For Inhalation IP 6 mcg + 200 mcg [616]	616	160000	70000	40000	0	40000	120000	92840
628	Budesonide Powder for Inhalation 200 mcg l 617]	617	0	0	0	0	0	0	0
629	Ipratropium Powder For Inhalation IP 40 mcg l 618]	618	0	0	0	0	0	0	0
630	Terbutaline Tablets IP 2.5 mg [619]	619	0	0	0	0	0	0	0
631	Xylometazoline Nasal Drops IP 0.1% [620]	620	3000	0	0	0	0	1200	5040
632	Cough Syrup/Expectorant(50 ml [692]	692	8000	10000	6700	0	6700	14000	100940
633	Acetophylline Tablet/ Capsule 100 mg [780]	780	10000	0	0	0	0	8000	5840
634	Compound Sodium Lactate Inj. IP [377]	377	72000	0	0	0	0	48000	480480
635	Dextrose inj. IP 25% w/v [378]	378	2400	500	240	0	240	1200	10092

21

S.No.	Drug Name	Drug Code	Demand 20_21	IndentQty 20_21	ReceivedfromDDW 20_21	LocalPurchaseQty 20_21	Total Rec Qty	Demand Qty 21_22	Demand Value 21_22
636	Dextrose Inj IP 10% [379]	379	1200	0	0	0	0	360	4788
637	Dextrose Inj IP 5% [380]	380	36000	2400	2400	0	2400	24000	244080
638	Multiple Electrolytes and Dextrose Injection Type I IP (Electrolyte P Injection) [381]	381	2400	0	0	0	0	1200	16308
639	Multiple Electrolytes and Dextrose Injection Type III IP Electrolyte M Injection (I.V.) [382]	382	1200	0	0	0	0	240	3262
640	Potassium Chloride Inj. 0.15 gm/ml [383]	383	300	0	0	0	0	200	1260
641	Potassium chloride Oral Solution U.S.P 500mg/5ml [384]	384	0	0	0	0	0	0	0
642	Sodium Chloride and Dextrose Injection IP 0.9 o/o + 5 o/o [385]	385	60000	0	0	0	0	12000	121800
643	Sodium Chloride Inj IP 500 ml [386]	386	72000	0	0	0	0	36000	348120
644	Sodium Chloride Injection IP 100 ml [621]	621	13000	28000	21000	0	21000	15000	96000
645	Ringer Acetate Infusion 500 ml [781]	781	2400	1800	480	0	480	600	7290
646	Sodium Chloride 0.45% w/v Polypack 500 ml [782]	782	1200	720	240	0	240	240	2820
647	Finasteride Tablets IP 5 mg [575]	575	3000	2000	2000	0	2000	2000	1890
648	Tamsulosin HCl Tablets/capsule 0.4 mg [576]	576	50000	40000	26000	0	26000	30000	14100
649	Flavoxate Tablets IP 200 mg (Coated Tablet) [579]	579	8000	4000	4000	0	4000	6000	9214
650	Savelamer Carbonate Tablet 400 mg (Each	783	0	0	0	0	0	0	0

08

S.No.	Drug Name	Drug Code	Demand 20_21	IndentQty 20_21	ReceivedfromDDW 20_21	LocalPurchaseQty 20_21	Total Rec Qty	Demand Qty 21_22	Demand Value 21_22
	Film Coated Tablet contains Savellamer Carbonate 400 mg) [783]								
651	Sodium Bicarbonate Tablet USP 1 gm (Each Film Coated Tablet contains Sodium Bicarbonate USP 1 gm) [784]	784	3000	500	0	0	0	0	0
652	Levamisol Hydrochloride Tablet IP 50 mg (Each Uncoated tablet contain levamisol Hydrochloride IP 50 mg) [785]	785	5000	1500	500	0	500	0	0
653	Phenazopyridine Tablet 5 mg [786]	786	0	0	0	0	0	0	0
654	Dutasteride Tablet 0.5 mg [787]	787	5000	2000	1000	0	1000	2000	850
655	Alkylizer Syrup 1.4 gm/ 5 ml (100ml) (Disodium Hydrogen Citrate) [788]	788	12000	6000	0	0	0	6000	47400
656	Bethistine Tab IP 8 mg [541]	541	6000	4000	4000	0	4000	5000	1113
657	Bethistine Tab IP 16 mg [542]	542	20000	8000	8000	0	8000	10000	3800
658	Cinnarizine Tablets IP 25 mg [543]	543	30000	10000	10000	0	10000	15000	2324
659	Cinnarizine Tablet IP 75 mg [544]	544	8000	10000	4000	0	4000	1500	374
660	Ascorbic Acid Tab IP 500mg [387]	387	200000	156800	95400	0	95400	200000	109240
661	Calcium Gluconate Inj IP 10% (IV use) [388]	388	200	0	0	0	0	500	2550
662	Ferrous Sulphate with Folic Acid Tab IP Each film coated Tab. Containing Dried	390	600000	82000	86000	0	86000	400000	42280

53

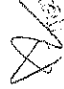
S.No.	Drug Name	Drug Code	Demand 20_21	IndentQty 20_21	ReceivedfromDDW 20_21	LocalPurchaseQty 20_21	Total Rec Qty	Demand Qty 21_22	Demand Value 21_22
663	Ferrous Sulphate IP- equiv 100 mg Elemental Iron and Folic Acid IP 0.5 mg [390]	391	4000	0	0	0	0	1000	48
664	Ferrous Sulphate with Folic Acid Tab (Paediatric) IP Each film coated Tab. Containing Dried Ferrous Sulphate IP-equivalent to 26mg Elemental Iron and Folic Acid IP-100 mcg [391]	392	200000	50000	60000	0	60000	120000	13560
665	Multivitamin Drops Each ml contains Vit A 3000 IU, Vit D3 300 IU, Vit B1 1mg, Riboflavine Phosphate Sodium 2mg, D-Panthenol 2.5mg, Niacinamide 10mg, Pyridoxine HCL 1mg, Cyanocobalamin 1mcg, Lysine HCL 10mg [393]	393	1000	500	200	0	200	600	3954
666	Multivitamin Tablets NFI Formula Sugar coated Vit A 2500 IU Vit B1-2mg Vit-B6-0.5mg Vit-C-50mg Calcium Pantothenate-1mg Vit-D3-200IU Vit-B2-2 mg Niacinamide-25mg Folic Acid-0.2 mg [394]	394	400000	100000	108000	0	108000	300000	108000
667	Vitamin B Complex Inj NFI [395]	395	200	75	50	0	50	100	815
668	Vitamin B complex tablet NFI (prophylactic) B1 2mg B2-2mg B6-	397	800000	200000	192000	0	192000	400000	82480

DR. LAKSHMI DEVI
 100/2, THE GREAT WALL
 CHENNAI - 600028
 044-26100000
 044-26100001

54


S.No.	Drug Name	Drug Code	Demand 20_21	IndentQty 20_21	ReceivedfromDDW 20_21	LocalPurchaseQty 20_21	Total Rec Qty	Demand Qty 21_22	Demand Value 21_22
	0.5mg Niacinamide 25mg Calcium panthothenate 1mg (With appropriate overages) [397]								
669	Vitamin A Paediatric Oral Solution IP (Vitamin A Concentrate Oil IP) Each ml Contains Vitamin A 100000 IU [409]	409	40	0	0	0	0	20	1944
670	Calcium and Vitamin D3 Suspension (Each 5 ml contains Calcium Carbonate equivalent to elemental Calcium 250 mg, Vitamin D3 125 IU) [441]	441	4000	500	500	0	500	2000	13700
671	Iron and Folic Acid Suspension. Each 5ml contains Ferrous Fumarate equivalent to elemental Iron 100mg, Folic Acid 500 mcg [448]	448	4000	1000	1000	0	1000	1500	16500
672	Zinc Sulphate Dispersible Tablets IP Elemental Zinc 10 mg [472]	472	50000	70000	20000	0	20000	100000	16000
673	Iron Sucrose Injection USP/BP 20mg/ml (For IV use) Each ml contains Ferric Hydroxide in complex with Sucrose equiv. to elemental Iron 20 mg [488]	488	10000	2000	2000	0	2000	5000	54850
674	Calcium with Vitamin D Tablets USP /Calcium and Calciferol Tablets BP/Calcium and	622	800000	191000	191000	0	191000	600000	109200

S.No.	Drug Name	Drug Code	Demand 20_21	IndentQty 20_21	ReceivedfromDDW 20_21	LocalPurchaseQty 20_21	Total Rec Qty	Demand Qty 21_22	Demand Value 21_22
	Vitamin D3 Tablets IP(Elemental Calcium 500 mg, Vitamin D3-250 IU) (Non-Chewable) [622]								
675	Cholecalciferol granules 60,000 IU /gm [623]	623	60000	30000	30000	0	30000	40000	88000
676	Mecobalamin Inj 500 mcg/ml [624]	624	2000	0	0	0	0	1000	2290
677	Pyridoxine Tablet IP 10 mg [626]	626	0	0	0	0	0	0	0
678	Pyridoxine Tablet IP 40mg [627]	627	0	0	0	0	0	0	0
679	Thiamine Tablets IP 100 mg [629]	629	6000	8000	4000	0	4000	5000	4823
680	Calcitriol Capsules IP 0.25 mcg [630]	630	5000	0	0	0	0	2000	1600
681	Methyl Cobalmine Tablet 500mcg [652]	652	300000	0	0	0	0	200000	96880
682	Methyl Cobalmine Tablet 1500mcg [653]	653	800000	100000	100000	0	100000	300000	268950
683	Vitamin D3 Oral Solution 60000 IU [676]	676	0	0	0	0	0	0	0
684	Ferric Carboxymaltose Injection 50 mg/ml 10 ml size [789]	789	2000	400	0	0	0	1000	1515000
685	Multi vitamin Syrup [790]	790	30000	0	0	0	0	5000	0
686	Flunarizine Tab 5 mg [147]	147	6000	4000	4000	0	4000	3000	500
687	Black Disinfectant Fluid (Phenyl) As per Schedule O Grade III [398]	398	50	12	12	0	12	30	6510
688	Conc Haemodialysis Fluid B.P. Acetate concentrate 10 Litre Can [399]	399	0	0	0	0	0	0	0
689	Peritoneal Dialysis Solution IP [401]	401	0	100	100	0	100	0	0


 Director
 Directorate of Health Services
 Government of Karnataka
 Bangalore

S.No.	Drug Name	Drug Code	Demand 20_21	IndenQty 20_21	ReceivedfromDDW 20_21	LocalPurchaseQty 20_21	Total Rec Qty	Demand Qty 21_22	Demand Value 21_22
690	Sodium Bicarbonate Inj IP 7.5% w/v [402]	402	1200	600	200	0	200	800	4768
691	Water for Inj IP [404]	404	60000	0	0	0	0	15000	18297
692	Alendronate Sodium Tablets USP / BP 35 mg [631]	631	0	0	0	0	0	0	0
693	Mannitol with Glycerin Injection 10 o/o + 10 o/o w/v (For Intravenous Infusion) [632]	632	0	0	0	0	0	0	0
694	Normal Human Intravenous immunoglobulin 5g/100ml [633]	633	120	20	20	0	20	60	296333
695	Pregabalin Cap IP 75 mg [634]	634	60000	40000	40000	0	40000	20000	14682
696	Surfactant for intrathecal instillation (natural bovine lung surfactant) [635]	635	100	81	60	0	60	80	399600
697	Concentrated Solution for Haemodialysis BP Sodium Hydrogen Carbonate Concentrate in 10 Litre Cans [687]	687	0	0	0	0	0	0	0
698	Intravenous Fat Emulsion 20% w/v 250ml [791]	791	500	20	0	0	0	50	11000
699	Pyridostigmine Tablet IP 60 mg (Each Tablet contains Pyridostigmine IP 60 mg) [792]	792	2000	0	0	0	0	0	0
700	Caffeine Citrate USP Injection 20mg/ml (equivalent to 10 mg caffeine base/ml) 3ml Size [793]	793	3000	0	0	0	0	500	0
701	Amino Acid 10% Injection 100ml Size [794]	794	5000	110	0	0	0	1000	0

S.No.	Drug Name	Drug Code	Demand 20_21	IndentQty 20_21	ReceivedfromDDW 20_21	LocalPurchaseQty 20_21	Total Rec Qty	Demand Qty 21_22	Demand Value 21_22
702	Vitamin E Capsule 400 mg [795]	795	60000	0	0	0	0	30000	37368
703	Inj Poractant Alpha 80 mg/ml in pack of 1.5 ml (Detail in RC) [796]	796	0	0	0	0	0	0	0
704	Absorbable Surgical Suture (Sterile Catgut) BP/USP Needled Suture Chromic(3/8 Cir RB Needle 40 mm Length 76 cm) Size -1/0 [R1]	R1	3600	1200	1200	0	1200	2400	45000
705	Absorbable Surgical Suture (Sterile Catgut) BP/USP Needled Suture Chromic(1/2 Cir RB Needle 20 mm Length 76 cm) Size -3/0 [R2]	R2	120	0	0	0	0	48	856
706	Absorbable Surgical Suture (Sterile Catgut) BP/USP Needled Suture Chromic(1/2 Cir RB Needle 30 mm Length 76 cm) Size -2/0 [R3]	R3	240	0	0	0	0	120	2270
707	Absorbable Surgical Suture (Sterile Catgut) BP/USP Needled Suture Chromic(1/2 Cir RB Needle 30 mm Length 76 cm) Size -1/0 [R4]	R4	0	0	0	0	0	0	0
708	Absorbable Surgical Suture (Sterile Catgut) BP/USP Needled Suture Chromic(1/2 Cir RB Needle 40mm Length 76 cm) Size -1/0 [R5]	R5	2400	1200	1200	0	1200	2400	47000
709	Absorbable Surgical Suture (Sterile Catgut) BP/USP Needled Suture Chromic(3/8 Cir RB Needle 30 mm Length 76 cm) Size-2/0 [R6]	R6	120	0	0	0	0	0	0

Made in
 Laboratory


S.No.	Drug Name	Drug Code	Demand 20_21	IndentQty 20_21	ReceivedfromDDW 20_21	LocalPurchaseQty 20_21	Total Rec Qty	Demand Qty 21_22	Demand Value 21_22
710	Absorbable Surgical Suture (Sterile Catgut) BP/USP Needled Suture Chromic(1/2 Cir RB Needle 45 mm Length 100 cm) Size-1 [R7]	R7	240	0	0	0	0	240	4740
711	Absorbable Surgical Suture (Sterile Catgut), Needled Suture Chromic Size-3/0 (3/8 Cir R/Cutting Needle 26mm, Length 76 cm) [R8]	R8	120	0	0	0	0	0	0
712	Absorbable Surgical Suture (Synthetic) Sterilised Needled (Braided) Coated Polyglactin / Polyglycolic Acid / Poly (Glycolide-co-L-lactide) Size - 3/0 1/2Cir RB Needle 20mm length 70 cm [R9]	R9	240	0	0	0	0	0	0
713	Absorbable Surgical Suture (Synthetic) Sterilised Needled (Braided) Coated Polyglactin / Polyglycolic Acid / Poly (Glycolide-co-L-lactide) Size-2/0 1/2 Cir RB Needle 30mm length 90 cm [R10]	R10	0	0	0	0	0	0	0
714	Absorbable Surgical Suture (Synthetic) Sterilised Needled (Braided) Coated Polyglactin / Polyglycolic Acid / Poly (Glycolide-co-L-lactide) 1/2 Cir RB Needle Size-1/0 30mm length 90 cm [R11]	R11	600	0	0	0	0	1200	28019

89

S.No.	Drug Name	Drug Code	Demand 20_21	Indent Qty 20_21	Received from DDW 20_21	Local Purchase Qty 20_21	Total Rec Qty	Demand Qty 21_22	Demand Value 21_22
715	Absorbable Surgical Suture (Synthetic) Sterilised Needled (Braided) Coated Polyglactin/Polyglycolic Acid/Poly(Glycolide-co-L-lactide) Size 1 1/2 Cir Tapercut Needle (Heavy) 40mm length 90 cm [R12]	R12	480	0	0	0	0	600	12350
716	Absorbable Surgical Suture (Synthetic) Sterilised Needled (Braided) Coated Polyglactin / Polyglycolic Acid / Poly(Glycolide-co-L-lactide) Size-1 1/2 Cir RB Needle 40mm length 90 cm [R13]	R13	600	1200	1200	0	1200	1200	22000
717	Absorbable Surgical Suture (Synthetic) Sterilised Needled (Braided) Coated Polyglactin/Polyglycolic Acid/Poly(Glycolide-co-L-lactide) Size-3/0 (1/2 Cir Conventional 25mm length 90 cm) Undyed [R14]	R14	120	0	0	0	0	0	0
718	Absorbable Surgical Suture (Synthetic) Sterilised Needled (Braided) Coated Polyglactin / Polyglycolic Acid / Poly(Glycolide-co-L-lactide) Size-4/0 (1/2 Cir RB Needle 20mm length 70 cm) [R15]	R15	0	0	0	0	0	0	0
719	Absorbable Surgical Suture (Synthetic)	R16	0	0	0	0	0	0	0

Government of Karnataka
 Bangalore
 10/10/2021
 [Signature]

S.No.	Drug Name	Drug Code	Demand 20_21	IndentQty 20_21	ReceivedfromDDW 20_21	LocalPurchaseQty 20_21	Total Rec Qty	Demand_Qty 21_22	Demand Value 21_22
720	Absorbable Surgical Suture (Synthetic) Sterilised Needled/ Braided) Coated Polyglactin / Polyglycolic Acid / Poly (Glycolide-co-L-lactide) Size-1/0(1/2 Cir RB Needle 40mm length 90 cm) [R17]	R17	600	0	0	0	0	240	4480
721	Absorbable Surgical Suture (Synthetic) Sterilised Needled/ Braided) Coated Polyglactin/Polyglycolic Acid/Poly(Glycolide-co-L-lactide)Size 3/0 3/8 Circle Cutting Needle 22mm length 45 cm [R18]	R18	120	0	0	0	0	0	0
722	Absorbable Surgical Suture(Synthetic) Sterilised Needled/ Braided)Coated Polyglactin/Polyglycolic Acid/Poly(Glycolide-co-L-lactide)Size-4/0 3/8 Circle Cutting 16mm Needle,Suture Length 70cm [R19]	R19	0	0	0	0	0	0	0
723	Chronic catgut suture(3/8 Cir RC)Cutting Needle -16 mm, Suture Length 76 cm) Size 5/0 (Details	R76	0	0	0	0	0	0	0

S.No.	Drug Name	Drug Code	Demand 20_21	IndentQty 20_21	ReceivedfromDDW 20_21	LocalPurchaseQty 20_21	Total Rec Qty	Demand_Qty 21_22	Demand_Value 21_22
724	Chromic catgut suture(3/8 Cir Cutting Needle 8 mm, Suture Length 35 cm) Size 6/0 (Details in RC) [R76]	R77	0	0	0	0	0	0	0
725	Chromic catgut suture(3/8 Cir R Cutting Needle 19 mm needle, Suture Length 76 cm) Size 4/0 (Details in RC) [R80]	R80	0	0	0	0	0	0	0
726	NON ABSORBABLE SURGICAL SUTURE, STERILISED NEEDLED BLACK BRAIDED Silk Size 3/0 (1/2 Cir RB Needle 20mm, Length 76 cm) [R20]	R20	240	0	0	0	0	120	1380
727	NON ABSORBABLE SURGICAL SUTURE, STERILISED NEEDLED BLACK BRAIDED SILK Size 3/0(3/8Cir Reverse Cutting Needle 26mm, Length 76 cm) [R21]	R21	2400	0	0	0	0	1800	21300
728	NON ABSORBABLE SURGICAL SUTURE, STERILISED NEEDLED BLACK BRAIDED Silk Size 2/0 (3/8Cir Reverse Cutting Needle 45mm, Length 76 cm) [R22]	R22	600	0	0	0	0	600	6500
729	NON ABSORBABLE SURGICAL SUTURE, STERILISED NEEDLED POLYAMIDE MONOFILAMENT	R23	60	0	0	0	0	0	0

RECEIVED
 20/07/2021
 10:30 AM
 10/11/2021
 10:30 AM

62

S.No.	Drug Name	Drug Code	Demand 20_21	IndentQty 20_21	ReceivedfromDDW 20_21	LocalPurchaseQty 20_21	Total Rec Qty	Demand Qty 21_22	Demand Value 21_22
	BLACK (NYLON) Size 8/0 (3/8 Cir Micropoint Round Body ,6mm Length 38 cm) [R23]								
730	NON ABSORBABLE SURGICAL SUTURE, STERILISED NEEDLED POLYAMIDE MONOFILAMENT BLACK (NYLON)Size 3/0 (3/8 Conventional Cutting Needle 16mm Length 70 cm) [R24]	R24	120	0	0	0	0	1800	21750
731	NON ABSORBABLE SURGICAL SUTURE, STERILISED NEEDLED POLYAMIDE MONOFILAMENT BLACK (NYLON)Size 4/0 (3/8 Conventional Cutting Needle 19mm Length 60 cm.) [R25]	R25	120	0	0	0	0	0	0
732	NON ABSORBABLE SURGICAL SUTURE, STERILISED NEEDLED POLYAMIDE MONOFILAMENT BLACK (NYLON)Size 5/0(3/8 Cir s/nm blade Cutting Needle 15mm Length 70 cm) [R26]	R26	240	0	0	0	0	0	0
733	NON ABSORBABLE SURGICAL SUTURE, STERILISED NEEDLED POLYAMIDE MONOFILAMENT BLACK (NYLON)Size 2/0 (3/8 Cir R Cutting	R27	600	0	0	0	0	3600	35700

S.No.	Drug Name	Drug Code	Demand 20_21	IndentQty 20_21	ReceivedfromDDW 20_21	LocalPurchaseQty 20_21	Total Rec Qty	Demand Qty 21_22	Demand Value 21_22
734	Needle 45mm Length 70 cm.) [R27] NON ABSORBABLE SURGICAL SUTURE, STERILISED NEEDED POLYAMIDE MONOFILAMENT BLACK (NYLON)Size 1/0 (3/8 Cir R Cutting Needle 45mm Length 70 cm.) [R28]	R28	60	0	0	0	0	60	725
735	NON ABSORBABLE SURGICAL SUTURE, STERILISED NEEDED MONOFILAMENT POLYPROPYLENE BLUE Size 5/0(1/2 Cir RB 13 mm Needle, Length 75cm) Double Arm [R29]	R29	0	0	0	0	0	0	0
736	NON ABSORBABLE SURGICAL SUTURE, STERILISED NEEDED MONOFILAMENT POLYPROPYLENE BLUE (3/8Cir RB 16 mm needle,Length 90 cm)Size 6/0 [R30]	R30	0	0	0	0	0	0	0
737	NON ABSORBABLE SURGICAL SUTURE, STERILISED NEEDED MONOFILAMENT POLYPROPYLENE BLUE Size 7/0 (3/8Cir RB Double 8mm Needle , Length 60 cm) [R31]	R31	0	0	0	0	0	0	0
738	NON ABSORBABLE SURGICAL SUTURE,	R32	0	0	0	0	0	0	0


 Chief Medical Officer
 Government Hospital, ...
 ...

63

S.No.	Drug Name	Drug Code	Demand 20_21	IndentQty 20_21	ReceivedfromDDW 20_21	LocalPurchaseQty 20_21	Total Rec Qty	Demand Qty 21_22	Demand Value 21_22
739	STERILISED NEEDED MONOFILAMENT POLYPROPYLENE BLUE Size 5/0(3/8Cr RB 16 mm Needle, Length 70 cm) [R32]	R33	0	0	0	0	0	0	0
740	NON ABSORBABLE SURGICAL SUTURE, STERILISED NEEDED MONOFILAMENT POLYPROPYLENE BLUE Size 1(1/2 Cr- RB Heavy Needle 45mm Length 90 cm) [R33]	R34	0	0	0	0	0	0	0
741	NON ABSORBABLE SURGICAL SUTURE, STERILISED NEEDED MONOFILAMENT POLYPROPYLENE BLUE Size 5/0(1/2 Cr RB Double Needle 17mm Length 90 cm) Detail in RC) [R35]	R35	0	0	0	0	0	0	0
742	NON ABSORBABLE SURGICAL SUTURE, STERILISED NEEDED MONOFILAMENT POLYPROPYLENE BLUE Size 4/0 (1/2 Cr	R36	0	0	0	0	0	0	0

S.No.	Drug Name	Drug Code	Demand 20_21	IndentQty 20_21	ReceivedfromDDW 20_21	LocalPurchaseQty 20_21	Total Rec Qty	Demand_Qty 21_22	Demand_Value 21_22
	Tapercut Double Needle 17mm Length 70 cm)(Detail in RC) [R36]								
743	NON ABSORBABLE SURGICAL SUTURE, STERILISED NEEDED MONOFILAMENT POLYPROPYLENE BLUE Size 3/0 (1/2 Cir RB Needle 25mm, Length 90 cm) Double Arm [R37]	R37	0	0	0	0	0	0	0
744	NON ABSORBABLE SURGICAL SUTURE, STERILISED NEEDED MONOFILAMENT POLYPROPYLENE BLUE Size 2/0 (1/2 Cir RB Needle 30mm, Length 90 cm) [R38]	R38	0	0	0	0	0	0	0
745	NON ABSORBABLE SURGICAL SUTURE, STERILISED NEEDED MONOFILAMENT POLYPROPYLENE BLUE Size 3/0 (1/2 Cir Tapercut Needle 17mm Length 75 cm) Double Arm [R39]	R39	0	0	0	0	0	0	0
746	NON ABSORBABLE SURGICAL SUTURE, STERILISED NEEDED MONOFILAMENT POLYPROPYLENE BLUE Size 2/0(1/2 Cir Tapercut needle, 25 mm Length 90 cm) Double Arm [R40]	R40	0	0	0	0	0	0	0

RECEIVED
 22/05/2022
 12:30 PM
 12/05/2022
 12:30 PM
 12/05/2022
 12:30 PM
 12/05/2022
 12:30 PM
 12/05/2022
 12:30 PM

S.No.	Drug Name	Drug Code	Demand 20_21	IndentQty 20_21	ReceivedfromDDW 20_21	LocalPurchaseQty 20_21	Total Rec Qty	Demand Qty 21_22	Demand Value 21_22
747	NON ABSORBABLE SURGICAL SUTURE, STERILISED NEEDED MONOFILAMENT POLYPROPYLENE BLUE Size 6/0(3/8 Cr Conventional Cutting PC-3Needle 15mm Length 60cm) [R41]	R41	0	0	0	0	0	0	0
748	NON ABSORBABLE SURGICAL SUTURE, STERILISED NEEDED MONOFILAMENT POLYPROPYLENE BLUE Size 6/0(3/8 Cr RB 15mm Needle, Length 90 cm Double Arm) [R42]	R42	0	0	0	0	0	0	0
749	NON ABSORBABLE SURGICAL SUTURE, STERILISED NEEDED MONOFILAMENT POLYPROPYLENE BLUE Size 4/0(1/2 Cr RB needle 16 mm Length 70 cm) [R43]	R43	0	0	0	0	0	0	0
750	NON ABSORBABLE SURGICAL SUTURE, STERILISED NEEDED MONOFILAMENT POLYPROPYLENE BLUE Size 3/0(3/8 Cr Cutting Needle 25mm length 45 cm) [R44]	R44	0	0	0	0	0	0	0
751	NON ABSORBABLE SURGICAL SUTURE, STERILISED NEEDED	R45	0	0	0	0	0	0	0

S.No.	Drug Name	Drug Code	Demand 20_21	IndentQty 20_21	ReceivedfromDDW 20_21	LocalPurchaseQty 20_21	Total Rec Qty	Demand Qty 21_22	Demand Value 21_22
	MONOFILAMENT POLYPROPYLENE BLUE Size 1 (1/2 Cir RB Heavy 40mm, length 90 cm) [R45]								
752	NON ABSORBABLE SURGICAL SUTURE, STERILISED NEEDED MONOFILAMENT POLYPROPYLENE BLUE Size 1 (1/2 Cir Reverse Cutting, 45 mm Needle length 100 cm) [R46]	R46	0	0	0	0	0	0	0
753	NON ABSORBABLE SURGICAL SUTURE, STERILISED NEEDED MONOFILAMENT POLYPROPYLENE BLUE Size 8/0 (3/8 Cir RB, 8mm Double Needle, Suture Length of 70cm) [R47]	R47	0	0	0	0	0	0	0
754	NON ABSORBABLE SURGICAL SUTURE, STERILISED NEEDED MONOFILAMENT POLYPROPYLENE BLUE Size 4/0 (1/2 Circle Tapercut 13mm Double Needle 70cm) [R48]	R48	0	0	0	0	0	0	0
755	NON ABSORBABLE SURGICAL SUTURE, STERILISED NEEDED MONOFILAMENT POLYPROPYLENE BLUE Size 5/0 (1/2	R49	0	0	0	0	0	0	0

Handwritten signature and stamp in the bottom right corner of the page.

S.No.	Drug Name	Drug Code	Demand 20_21	Indent Qty 20_21	Received from DDW 20_21	Local Purchase Qty 20_21	Total Rec Qty	Demand Qty 21_22	Demand Value 21_22
	Circle CC 13mm Needle , Suture Length of 70cm) DOUBLE ARM [R49]								
756	NON ABSORBABLE SURGICAL SUTURE, STERILISED NEEDED MONOFILAMENT POLYPROPYLENE BLUE Size 2/0 (1/2 Circle Tapercut Needle 17mm Suture Length of 90cm) Double Arm [R50	R50	0	0	0	0	0	0	0
757	NON ABSORBABLE SURGICAL SUTURE, STERILISED NEEDED MONOFILAMENT POLYPROPYLENE BLUE Size 3/0 (1/2 Cir RB Needle 25mm, Suture Length of 75cm) Double Arm [R51]	R51	0	0	0	0	0	0	0
758	NON ABSORBABLE SURGICAL SUTURE, STERILISED NEEDED Polybutylate /Silicon Coated Polyester Braided green/ blue Size 4/0(1/2 Cir Tapercut ,17 mm Double Needle, length 75 cm) [R52]	R52	0	0	0	0	0	0	0
759	NON ABSORBABLE SURGICAL SUTURE, STERILISED NEEDED Polybutylate / Silicon Coated Polyester Braided White Size:2/0 (1/2 Cir Tapercut ,17 mm Double Needle, length 90 cm) [R53	0	0	0	0	0	0	0

S.No.	Drug Name	Drug Code	Demand 20_21	IndentQty 20_21	ReceivedfromDDW 20_21	LocalPurchaseQty 20_21	Total Rec Qty	Demand Qty 21_22	Demand Value 21_22
760	R53] NON ABSORBABLE SURGICAL SUTURE, STERILISED NEELED Polybutylate /Silicon Coated Polyester Braided Green/Blue Size 2/0(1/2 Cir Tapercut ,17 mm Double Needle, length 90 cm)(Detail in RC) [R54]	R54	0	0	0	0	0	0	0
761	Non absorbable surgical suture sterilized needed Polybutylate/Silicon Coated with Polyester Braided(Green/Blue) Size 2/0 1/2 Circle Taper cut,17mm Double armed Needle,Suture Length of 90cm with pledgets Size 6 X 3 X 1.5mm [R55]	R55	0	0	0	0	0	0	0
762	Non absorbable surgical suture sterilized needed Polybutylate/Silicon Coated with Polyester Braided(Green/blue)Size 2-0 1/2 Circle Taper cut ,25mm Double armed Needle, Suture Length of 90cm with pledgets Size 6 X 3 X 1.5mm [R56]	R56	0	0	0	0	0	0	0
763	NON ABSORBABLE SURGICAL SUTURE, STERILISED NEELED Coated Polyester Braided, Green/ White or Blue/White Coated Polyester Braided (Green / Blue) with Size: 3/0 1/2 Circle Tapercut	R57	0	0	0	0	0	0	0

Handwritten signature and stamp in the right margin.

S.No.	Drug Name	Drug Code	Demand 20_21	IndentQty 20_21	ReceivedfromDDW 20_21	LocalPurchaseQty 20_21	Total Rec Qty	Demand_Qty 21_22	Demand Value 21_22
	Double Needle 25mm, Suture Length 90 cm [R57]								
764	NON ABSORBABLE SURGICAL SUTURE, STERILISED NEEDLED POLYAMIDE MONOFILAMENT BLACK (NYLON) Size 10/0 (3/8 Cutting spatulated Edge Needle, Double arm Needle 6 mm, Suture length 30-42 cm [R75]	R75	0	0	0	0	0	0	0
765	B.B Silk suture (3/8 Cir RB Needle 20mm, Length 76 cm size 4/0 (Details in RC) [R78]	R78	0	0	0	0	0	0	0
766	B.B Silk suture (3/8 Cir RB Needle 16mm, Length 76 cm Size 5/0 (Details in RC) [R79]	R79	0	0	0	0	0	0	0
767	ABSORBABLE SURGICAL SUTURES, STERILISED NEEDLED POLYGLYCOLICAPRONE/ Polylglyconate, MONOFILAMENT SUTURES Size 2/0 (1/2 Circle Oval RB Needle 26mm Needle, Suture Length of 70cm) [R61]	R61	0	0	0	0	0	0	0
768	ABSORBABLE SURGICAL SUTURES STERILISED NEEDLED MONOFILAMENT POLYGLYCOLICAPRONE / Polylglyconate, Size 3/0 (1/2 Circle OvalRB	R62	0	0	0	0	0	0	0

S.No.	Drug Name	Drug Code	Demand 20_21	IndentQty 20_21	ReceivedfromDDW 20_21	LocalPurchaseQty 20_21	Total Rec Qty	Demand Qty 21_22	Demand Value 21_22
	Contrast Needle 26mm, suture length 70cm) [R62]								
769	ABSORBABLE SURGICAL SUTURES STERILISED NEEDED MonofilamentPolyglucap /Polyglyconate Size 4/0 (1/2 Circle Cutting 16mm Needle,suture length 70cm) [R63]	R63	0	0	0	0	0	0	0
770	ABSORBABLE SURGICAL SUTURES STERILISED NEEDED MonofilamentPolyglucap /Polyglyconate Size 3/0 (3/8 Circle Cutting 25mm Needle, Suture Length of 70cm) [R64]	R64	0	0	0	0	0	0	0
771	Absorbable Surgical Suture (Synthetic) Sterilised Needled Suture Monofilament Polydioxanone Violet Size 1 (1/2 Circle Reverse Cutting 50 mm Length 90cm) [R65]	R65	0	0	0	0	0	0	0
772	Absorbable Surgical Suture (Synthetic) Sterilised Needled Suture Monofilament Polydioxanone Violet Size 2/0 (1/2 Circle RB 31mm Needle, Length 70cm) [R66]	R66	0	0	0	0	0	0	0
773	Absorbable Surgical Suture (Synthetic) Sterilised Needled Suture Monofilament Polydioxanone Violet	R67	0	0	0	0	0	0	0

RECEIVED
 15.05.2022
 15.05.2022
 15.05.2022
 15.05.2022

12

S.No.	Drug Name	Drug Code	Demand_20_21	IndentQty_20_21	ReceivedfromDDW_20_21	LocalPurchaseQty_20_21	Total Rec Qty	Demand_Qty_21_22	Demand Value_21_22
774	Size 1/0(1/2 Circle RB 30mm Needle,Length 70cm) [R67]	R68	1200	1200	240	0	240	600	59000
775	Absorbable Surgical Suture(Synthetic) Antibacterial coated sterilised needled/ Braided coated Polyglactin/Polyglycolic Acid violet)Size 1/0 1/2 circle CT round bodied 40mm, GS needle,suture length 90 cm [R681]	R69	240	0	0	0	0	600	60000
776	Absorbable Surgical Suture (Synthetic) Antibacterial with sterilised needled suture (Braided coated Polyglactin / Polyglycolic Acid violet)Size 2/0 1/2 circle round bodied 30mm, suture length 90 cm [R70]	R70	0	0	0	0	0	600	61334
777	Absorbable Surgical Suture (Synthetic) Antibacterial with sterilised needled suture (Braided coated Polyglactin/ Polyglycolic Acid violet)Size 1 1/2 circle	R71	480	240	240	0	240	240	31000

73

S.No.	Drug Name	Drug Code	Demand 20_21	IndentQty 20_21	ReceivedfromDDW 20_21	LocalPurchaseQty 20_21	Total Rec Qty	Demand Qty 21_22	Demand Value 21_22
778	Reverse Cutting, OS 40mm, suture length 90 cm [R71] absorbable Surgical Suture (Synthetic) Antibacterial with sterilised needled suture (Braided coated Polyglactin / Polyglycolic Acid violet)Size 1/0 1/2 circle Reverse Cutting 36mm, OS needle, suture length 90 cm [R72]	R72	120	0	0	0	0	60	7800
779	Absorbable Surgical Suture (Synthetic) Antibacterial with sterilised needled suture(Braided coated Polyglactin/Polyglycolic Acid violet)Size 3/0 1/2 circle round bodied 20mm, suture length 70 cm [R73]	R73	240	0	0	0	0	120	11400
780	Absorbable Surgical Suture (Synthetic) Antibacterial with sterilised needled suture (Braided coated Polyglactin/ Polyglycolic Acid violet)Size 3/0 3/8 circle R Cutting, PS-1,24mm, suture length 70 cm [R74]	R74	360	0	0	0	0	0	0
781	Absorbable Gelatin Sponge 80 x 50x 10mm(Details in RC) [S1]	S1	200	0	0	0	0	100	4932
782	Absorbent Cotton Wool IP 500 gm [S2]	S2	5000	400	0	400	400	4000	520000
783	Asepto Syringe with	S3	0	0	0	0	0	0	0

महाराष्ट्र शासन
स्वास्थ्य विभाग
मुंबई

7M

S.No.	Drug Name	Drug Code	Demand 20_21	IndentQty 20_21	ReceivedfromDDW 20_21	LocalPurchaseQty 20_21	Total Rec Qty	Demand Qty 21_22	Demand Value 21_22
	Transparent Bulb Sterile, 60 ml [S3]								
784	Blood Administration Set Blood Transfusion Set (Details in RC) [S4]	S4	4000	1200	1200	0	1200	3000	24090
785	Gloves Size 6.5 Inches, Powdered (Disposable Sterile Surgical Rubber Gloves)(Details in RC) [S5.a]	S5.a	40000	66000	39000	0	39000	40000	305200
786	Gloves Size 6.5 Inches, Powder free (Disposable Sterile Surgical Rubber Gloves)(Details in RC) [S5.b]	S5.b	0	0	0	0	0	0	0
787	Gloves Size 7 Inches, Powdered (Disposable Sterile Surgical Rubber Gloves)(Details in RC) [S6.a]	S6.a	6000	80000	15500	0	15500	60000	457800
788	Gloves Size 7 Inches, Powder free (Disposable Sterile Surgical Rubber Gloves)(Details in RC) [S6.b]	S6.b	0	20000	10000	0	10000	5000	66250
789	Gloves Size 7.5 Inches, Powdered (Disposable Sterile Surgical Rubber Gloves)(Details in RC) [S7.a]	S7.a	40000	125000	14500	0	14500	60000	457800
790	Gloves Size 7.5 Inches, Powder free (Disposable Sterile Surgical Rubber Gloves)(Details in RC) [S7.b]	S7.b	0	20000	10000	0	10000	5000	66250
791	Suction Catheter, Sterile Size: FG 5 (Details in RC) [S8.a]	S8.a	300	0	0	0	0	200	718
792	Suction Catheter, Sterile Size: F G-6 (Details in	S8.b	600	0	0	0	0	400	1480

S.No.	Drug Name	Drug Code	Demand 20_21	IndentQty 20_21	ReceivedfromDDW 20_21	LocalPurchaseQty 20_21	Total Rec Qty	Demand Qty 21_22	Demand Value 21_22
	RC) [S8.b]								
793	Suction Catheter, Sterile. Size: F G-8 (Details in RC) [S8.c]	S8.c	4000	0	0	0	0	2000	7200
794	Suction Catheter, Sterile. Size: F G-10 (Details in RC) [S8.d]	S8.d	800	200	200	0	200	400	1396
795	Suction Catheter, Sterile. Size: F G-12 (Details in RC) [S8.e]	S8.e	400	0	0	0	0	200	760
796	Suction Catheter, Sterile. Size: F G-14 (Details in RC) [S8.f]	S8.f	400	0	0	0	0	300	1140
797	Suction Catheter, Sterile. Size: F G-16 (Details in RC) [S8.g]	S8.g	2000	0	0	0	0	1200	4800
798	Suction Catheter, Sterile. Size: F G-18 (Details in RC) [S8.h]	S8.h	200	0	0	0	0	200	822
799	Suction Catheter, Sterile. Size: F G-20 (Details in RC) [S8.i]	S8.i	0	0	0	0	0	0	0
800	Suction Catheter, Sterile. Size: F G-22 (Details in RC) [S8.j]	S8.j	0	0	0	0	0	0	0
801	Catheter, Size 8 (Foleys Ballon Catheter Sterile, 2 way for Urinary Drainage, Single Use.) Silicon coated natural Latex material (Details in RC) [S9.a]	S9.a	0	0	0	0	0	0	0
802	Catheter, Size 10 (Foleys Ballon Catheter Sterile, 2 way for Urinary Drainage, Single Use.) Silicon coated natural Latex material (Details in RC) [S9.b]	S9.b	0	0	0	0	0	0	0
803	Catheter, Size 16 (Foleys)	S9.c	2000	1000	1000	0	1000	1000	15830

प्रमारी अधिकारी
मुख्यमंत्री कार्यालय
पुणे

S.No.	Drug Name	Drug Code	Demand 20_21	IndentQty 20_21	ReceivedfromDPW 20_21	LocalPurchaseQty 20_21	Total Rec Qty	Demand_Qty 21_22	Demand_Value 21_22
	Ballon Catheter Sterile,2 way for Urinary Drainage,Single Use,) Silicon coated natural Latex material(Details in RC) [S9.c]								
804	Catheter,Size 18(Foleys Ballon Catheter Sterile,2 way for Urinary Drainage,Single Use,) Silicon coated natural Latex material(Details in RC) [S9.d]	S9.d	400	0	0	0	0	200	3166
805	Catheter,Size 20(Foleys Ballon Catheter Sterile,2 way for Urinary Drainage,Single Use,) Silicon coated natural Latex material(Details in RC) [S9.e]	S9.e	0	0	0	0	0	0	0
806	Catheter,Size 22(Foleys Ballon Catheter Sterile,2 way for Urinary Drainage,Single Use,) Silicon coated natural Latex material(Details in RC) [S9.f]	S9.f	0	0	0	0	0	0	0
807	Catheter,Size 24(Foleys Ballon Catheter Sterile,2 way for Urinary Drainage,Single Use,) Silicon coated natural Latex material(Details in RC) [S9.g]	S9.g	0	0	0	0	0	0	0
808	Infant Feeding Tube Size 10FG(Details in RC) [S10.a]	S10.a	200	0	0	0	0	100	310
809	Infant Feeding Tube Size 8FG(Details in RC) [S10.b]	S10.b	600	0	0	0	0	500	1550
810	Infant Feeding Tube	S10.c	400	0	0	0	0	200	620

S.No.	Drug Name	Drug Code	Demand 20_21	IndentQty 20_21	ReceivedfromDDW 20_21	LocalPurchaseQty 20_21	Total Rec Qty	Demand Qty 21_22	Demand Value 21_22
	Size 5FG(Details in RC) [S10.c]								
811	Perfusion Set with Airway and Needle,(Adult Use) Sterile Disposable(Details in RC) [S11]	S11	10000	0	0	0	0	20000	115000
812	Perfusion Set (Infusion set) with Airway and Needle (Paediatric Use) Sterile Disposable(Details in RC) [S12]	S12	1000	0	0	0	0	100	2090
813	Infusion Set with Microdrip,(I.V.)Sterile Disposable(Details in RC) [S13]	S13	200	0	0	0	0	200	1280
814	Insulin syringe (40 units) with (fixed) 30 G needle Shall conform to IS 12227 [S14]	S14	10000	14000	10750	1000	11750	10000	18500
815	Sterile Disposable (Single Use) Teflon/ PTFE I.V Cannula with integrated 3 Way stop cock Size 16G (Details in RC) [S15.a]	S15.a	0	0	0	0	0	0	0
816	Sterile Disposable (Single Use)Teflon / PTFE I.V. Cannula with integrated 3 Way stop cock.) Size 18G (Details in RC) [S15.b]	S15.b	200	0	0	0	0	300	1950
817	Sterile Disposable (Single Use) Teflon/ PTFE I.V. Cannula with integrated 3 Way stop cock.Size 20 G (Details in RC) [S15.c]	S15.c	40000	0	0	0	0	25000	165000
818	Sterile Disposable (Single Use) Teflon/ PTFE I.V. Cannula with	S15.d	20000	3000	3000	0	3000	20000	130200

Government of Karnataka
 Department of Health and Family Welfare
 Bangalore

S.No.	Drug Name	Drug Code	Demand 20_21	IndentQty 20_21	ReceivedfromDBW 20_21	LocalPurchaseQty 20_21	Total Rec Qty	Demand_Qty 21_22	Demand Value 21_22
	integrated 3 Way stop cook,Size 22G (Details in RC) [S15.d]								
819	Sterile Disposable (Single Use) Teflon/PTFE I.V. Cannula without port Size 24G (Details in RC) [S15.e]	S15.e	8000	4000	3000	0	3000	5000	25000
820	Mucous Extractor Sterile (Details in RC) [S16]	S16	0	0	0	0	0	0	0
821	Nasal Oxygen Set, Twin Bore All Sizes Adult (Details in RC) [S17.a]	S17.a	0	50	50	0	50	0	0
822	Nasal Oxygen Set, Twin Bore All Sizes Paediatrics (Details in RC) [S17.b]	S17.b	0	0	0	0	0	0	0
823	Paper Adhesive Plaster 1 inch X 9.0 mts (with cutter) Non woven adhesive tape [S18]	S18	8000	4640	4560	0	4560	5000	58500
824	Paper Adhesive Plaster 2 inch X 9.0 mts (with cutter) Non Woven Adhesive Tape [S19]	S19	4000	0	0	0	0	1000	21850
825	Paper Adhesive Plaster 3 inch X 9.0 mts (with cutter) Non woven adhesive tape [S20]	S20	3000	0	0	0	0	2000	60280
826	Plaster of Paris Bandage 15cm X 2.7 mts/Roll I [S21]	S21	15000	2000	2400	0	2400	10000	211300
827	Plaster of Paris Bandage 10cm X 2.7mts [S22]	S22	5000	1200	1200	0	1200	2000	29900
828	Ryles Tube / Nasogastric Tube Size: 10 (Details in RC) [S23.a]	S23.a	100	0	0	0	0	100	642
829	Ryles Tube / Nasogastric Tube Size: 12 (Details in RC) [S23.b]	S23.b	100	0	0	0	0	100	642

79

S.No.	Drug Name	Drug Code	Demand 20_21	IndentQty 20_21	ReceivedfromDDW 20_21	LocalPurchaseQty 20_21	Total Rec Qty	Demand Qty 21_22	Demand Value 21_22
830	Ryles Tube / Nasogastric Tube Size:14 (Details in RC) [S24.a]	S24.a	100	0	0	0	0	100	606
831	Ryles Tube / Nasogastric Tube Size: 16 (Details in RC) [S24.b]	S24.b	1200	0	0	0	0	600	3852
832	Ryles Tube / Nasogastric Tube Size: 18 (Details in RC) [S24.c]	S24.c	200	0	0	0	0	150	971
833	Scalp Vein Set (Disposable) Size 18G (Details in RC) [S25.a]	S25.a	0	0	0	0	0	0	0
834	Scalp Vein Set (Disposable) Size 20G (Details in RC) [S25.b]	S25.b	0	0	0	0	0	0	0
835	Scalp Vein Set (Disposable) Size 22G (Details in RC) [S25.c]	S25.c	0	0	0	0	0	0	0
836	Scalp Vein Set (Disposable) Size 24 G (Details in RC) [S25.d]	S25.d	0	0	0	0	0	0	0
837	Syringe 2 ml Hypodermic with Needle attached 24G, Sterile, Single Use Disposable (Details in RC) [S26]	S26	80000	20000	20000	0	20000	50000	59000
838	Syringe 5 ml Hypodermic with Needle attached 24G, Sterile, Single Use Disposable (Details in RC) [S27]	S27	300000	30000	40000	0	40000	200000	270000
839	Syringe 10 ml Hypodermic with Needle attached 22G, Sterile, Single Use Disposable (Details in RC) [S28]	S28	300000	0	0	0	0	150000	273000
840	Syringe 20 ml	S29	3000	14250	14250	0	14250	2000	7460

Handwritten signature and date: 23/01/2022

S.No.	Drug Name	Drug Code	Demand 20_21	IndentQty 20_21	ReceivedfromDDW 20_21	LocalPurchaseQty 20_21	Total Rec Qty	Demand Qty 21_22	Demand Value 21_22
	Hypodermic with Needle attached 22G, Sterile, Single Use Disposable(Details in RC) [S29]								
841	Surgical Blade Sterile, Size 11(Details in RC) [S30.a]	S30.a	5000	0	0	0	0	500	880
842	Surgical Blade Sterile, Size 15(Details in RC) [S30.b]	S30.b	6000	0	0	0	0	500	880
843	Surgical Blade Sterile, Size 22(Details in RC) [S30.c]	S30.c	20000	0	0	0	0	500	880
844	Suture Needles Curved 1/2 Circle Round Body Assorted Size 11-15(Details in RC) [S31]	S31	0	0	0	0	0	0	0
845	Suture Needles Curved 1/2 Circle Round Body Assorted Size 1-5(Details in RC) [S32]	S32	0	0	0	0	0	0	0
846	Suture Needles Curved 1/2 Circle Round Body Assorted Size 16-20(Details in RC) [S33]	S33	0	0	0	0	0	0	0
847	Suture Needles Curved 1/2 Circle Round Body Assorted Size 6-10(Details in RC) [S34]	S34	0	0	0	0	0	0	0
848	Suture Needles Curved And Cutting 1/2 Circle Cutting Size 6-10(Details in RC) [S35]	S35	0	0	0	0	0	0	0
849	Suture Needles Curved And Cutting 1/2 Circle Size 11-15(Details in RC) [S36]	S36	0	0	0	0	0	0	0
850	Suture Needles Curved And Cutting 1/2 Circle	S37	0	0	0	0	0	0	0

S.No.	Drug Name	Drug Code	Demand 20_21	IndentQty 20_21	ReceivedfromDDW 20_21	LocalPurchaseQty 20_21	Total Rec Qty	Demand Qty 21_22	Demand Value 21_22
	Size 16-20(Details in RC) [S37]								
851	Suture Needles Curved And Cutting Size 1-5(Details in RC) [S38]	S38	0	0	0	0	0	0	0
852	Sterile Disposable Spinal Needle for Single Use. 22G x 3 1/2 inch (Details in RC) [S39.a]	S39.a	1000	0	0	0	0	1000	21420
853	Sterile Disposable Spinal Needle for Single Use. 25G x 3 1/2 inch (Details in RC) [S39.b]	S39.b	4000	700	200	0	200	3000	68700
854	Urine Collecting Bag, Disposable 2000 ml(Details in RC) [S40]	S40	6000	1000	1000	0	1000	3000	33750
855	Double J Stent, Sterile, Both Ends Open - size 4F, length 16 cm [S41.a]	S41.a	0	0	0	0	0	0	0
856	Double J Stent, Sterile, Both Ends Open, size 5F , length 20 cm [S41.b]	S41.b	0	0	0	0	0	0	0
857	Double J Stent, Sterile, One End Closed - size 4F, length 16 cm [S42.a]	S42.a	0	0	0	0	0	0	0
858	Double J Stent, Sterile, One End Closed, size 5F , length 20 cm [S42.b]	S42.b	0	0	0	0	0	0	0
859	Endotracheal Tube, Plain - Size 2.5 (Details in RC) [S43.a]	S43.a	250	0	0	0	0	200	2862
860	Endotracheal Tube, Plain - Size 3 (Details in RC) [S43.b]	S43.b	350	0	0	0	0	250	3578
861	Endotracheal Tube, Plain - Size 3.5 (Details in RC) [S43.c]	S43.c	250	100	100	0	100	200	2862
862	Endotracheal Tube, Plain - Size 4 (Details in	S43.d	0	0	0	0	0	30	429



S.No.	Drug Name	Drug Code	Demand 20_21	Indemty 20_21	ReceivedfromDDW 20_21	LocalPurchaseQty 20_21	Total Rec Qty	Demand Qty 21_22	Demand Value 21_22
	RC) [S43.d]								
863	Endotracheal Tube, Plain - Size 4.5 (Details in RC) [S43.e]	S43.e	0	0	0	0	0	30	429
864	Endotracheal Tube, Plain - Size 5 (Details in RC) [S43.f]	S43.f	0	0	0	0	0	30	429
865	Endotracheal Tube, Plain - Size 5.5 (Details in RC) [S43.g]	S43.g	60	0	0	0	0	30	429
866	Endotracheal Tube, Plain - Size:6 (Details in RC) [S43.h]	S43.h	0	0	0	0	0	30	429
867	Endotracheal Tube, Plain -Size 6.5 (Details in RC) [S43.i]	S43.i	0	0	0	0	0	0	0
868	Endotracheal Tube, Plain - Size 7 (Details in RC) [S43.j]	S43.j	0	0	0	0	0	0	0
869	Endotracheal Tube, Plain - Size 7.5 (Details in RC) [S43.k]	S43.k	0	0	0	0	0	0	0
870	Endotracheal Tube, Plain - Size 8 (Details in RC) [S43.l]	S43.l	0	0	0	0	0	0	0
871	Endotracheal Tube, Plain - Size 8.5 (Details in RC) [S43.m]	S43.m	0	0	0	0	0	0	0
872	Endotracheal Tube, Cuffed - Size 4 (Details in RC) [S44.a]	S44.a	60	0	0	0	0	20	508
873	Endotracheal Tube, Cuff - Size 4.5 (Details in RC) [S44.b]	S44.b	60	0	0	0	0	30	795
874	Endotracheal Tube, Cuff - size 5 (Details in RC) [S44.c]	S44.c	100	0	0	0	0	60	1552
875	Endotracheal Tube, Cuff - size 6 (Details in RC) [S44.d]	S44.d	200	0	0	0	0	60	1525

83

S.No.	Drug Name	Drug Code	Demand 20_21	IndentQty 20_21	ReceivedfromDDW 20_21	LocalPurchaseQty 20_21	Total Rec Qty	Demand Qty 21_22	Demand Value 21_22
	S44.d]								
876	Endotracheal Tube, Cuff - Size 6.5 (Details in RC) [S44.e]	S44.e	250	0	0	0	0	100	2542
877	Endotracheal Tube, Cuff - Size 7 (Details in RC) [S44.f]	S44.f	400	0	0	0	0	300	7626
878	Endotracheal Tube, Cuff - size 7.5 (Details in RC) [S44.g]	S44.g	800	0	0	0	0	400	10168
879	Endotracheal Tube, Cuff - size 8 (Details in RC) [S44.h]	S44.h	120	0	0	0	0	150	3813
880	Endotracheal Tube, Cuff - size 8.5 (Details in RC) [S44.i]	S44.i	100	0	0	0	0	100	2542
881	Endotracheal Tube, Cuff - size 9 (Details in RC) [S44.j]	S44.j	40	0	0	0	0	20	530
882	Tracheostomy Tube, Plain - All Sizes(Details in RC) [S45]	S45	10	0	0	0	0	0	0
883	Tracheostomy Tube (PVC), Cuffed - All Sizes (Details in RC) [S46]	S46	10	0	0	0	0	10	1361
884	Abdominal Drain Kit (with Collection Bag 2000 ml Size 24 (Details in RC) [S47.a]	S47.a	20	0	0	0	0	0	0
885	Abdominal Drain Kit, Sterile, Having drainage catheter and Collection Bag (2000 ml) Size 28 (Details in RC) [S47.b]	S47.b	100	0	0	0	0	10	362
886	Abdominal Drain Kit, Sterile, Having Drainage Cather and Collection Bag(2000) ml Size 32 (Details in RC) [S47.c]	S47.c	100	0	0	0	0	10	400

प्रभारी अधिकारी
 प्रशासनिक विभाग का योजना
 प्रशासनिक विभाग का कार्यालय

84

S.No.	Drug Name	Drug Code	Demand 20_21	IndentQty 20_21	ReceivedfromDDW 20_21	LocalPurchaseQty 20_21	Total Rec Qty	Demand Qty 21_22	Demand Value 21_22
887	Corrugated Drainage Sheet - All sizes (Details in RC) [S481]	S48	20	0	0	0	0	0	0
888	Polypropylene Nonabsorbable Synthetic Surgical Mesh 7.6cm X 15cm OR 7.5cm X 15cm [S731]	S73	100	0	0	0	0	10	3517
889	Polypropylene Nonabsorbable Synthetic Surgical Mesh 15 cm X 15 cm [S74]	S74	200	0	0	0	0	0	0
890	Sterilized Umbilical Cotton Tape Width 3 mm, Length 75 cm (Details in RC) [S79]	S79	0	0	0	0	0	0	0
891	Bone Wax Sterilised [S80]	S80	0	0	0	0	0	0	0
892	Temporary Cardiac Pacing Wire (Electrode) Sterile 1/2 Cir, Tapercut, 26 mm; Reverse cutting 60 mm [S81]	S81	0	0	0	0	0	0	0
893	Skin Graft Knife Blade (Sterile) (Details in RC) [S82]	S82	20	0	0	0	0	0	0
894	K Wire, length 375 mm; 1mm (Details in RC) [S84.a]	S84.a	100	0	0	0	0	0	0
895	K Wire, length 375 mm; 1.6mm (Details in RC) [S84.b]	S84.b	100	0	0	0	0	0	0
896	K Wire, length 375 mm; 1.8mm (Details in RC) [S84.c]	S84.c	100	0	0	0	0	0	0
897	Face Mask, Disposable (Details in RC) [S85]	S85	60000	159000	78000	0	78000	100000	178000
898	Surgical Cap Disposable (For Surgeons) (Details in RC) [S86.a]	S86.a	10000	11000	10000	0	10000	10000	9300

S.No.	Drug Name	Drug Code	Demand 20_21	IndentQty 20_21	ReceivedfromDDW 20_21	LocalPurchaseQty 20_21	Total Rec Qty	Demand_Qty 21_22	Demand_Value 21_22
	gloves, size small (Details in RC) [S90.b]								
910	Rubber Examination gloves, size Medium (Details in RC) [S90.c]	S90.c	250000	500000	1000000	0	1000000	250000	338500
911	Rubber Examination gloves made of natural rubber latex, Non-Sterile, Size Large (Details in RC) [S90.d]	S90.d	400000	1100000	0	0	0	60000	81240
912	Pressure Monitoring Line / High Pressure Extension Line (Details in RC) [S91]	S91	0	0	0	0	0	0	0
913	Urine Collecting Bag for new born / Paediatric Urine Collection Bag, capacity 100ml (Details in RC) [S92]	S92	200	0	0	0	0	50	279
914	Umbilical Catheter for new born, all Sizes (Details in RC) [S93]	S93	200	0	0	0	0	50	413
915	Umbilical cord clamp (Details in RC) [S94]	S94	5000	2000	2000	0	2000	3000	6750
916	Absorbable Oxidized Regenerated Cellulose net size 2 x 3 Topical Absorbable Haemostatic Bactericidal Property (Details in RC) [S95]	S95	240	0	0	0	0	120	83780
917	Close wound drainage device under negative pressure (closed wound suction unit) Size of below 800 ml, catheter size 16 (Details in RC) [S96.A]	S96.A	20	0	0	0	0	20	1880
918	Close wound drainage device under negative pressure (closed wound	S96.B	40	0	0	0	0	20	1880

87

S.No.	Drug Name	Drug Code	Demand 20_21	IndentQty 20_21	ReceivedfromDDW 20_21	LocalPurchaseQty 20_21	Total Rec Qty	Demand Qty 21_22	Demand Value 21_22
919	suction unit) Size of bellow 800 ml, catheter size 18 (Details in RC) [S96.B]	S97	10	0	0	0	0	0	0
920	T-tube for common bile duct drainage, Length 20x60 cm, Size- (Details in RC) [S97]	S98	0	0	0	0	0	0	0
921	Bone Cement [S98]	S99.A	5000	0	0	0	0	5000	10167
922	Sanitary Napkin Beltless (Details in RC) [S99.A]	S99.B	3000	0	0	0	0	1000	3900
923	Sanitary Pads Belt Type (Details in RC) [S99.B]	S99.P	3000	0	0	0	0	0	0
924	Sanitary Napkin Beltless With Wings (Details in RC) [S99.P]	S100	50	1550	1550	0	1550	2000	34400
925	Oxygen Mask (Adult) [S100]	S101	20	0	0	0	0	100	1707
926	Oxygen Mask (Pediatric) [S101]	S102	200	0	0	0	0	300	4539
927	Foleys Catheter No. 14 (Detail in RC) [S102]	S103	1000	0	0	0	0	1000	4060
928	Nelaton Catheter size 14 FG (Detail in RC) [S103]	S104	0	0	0	0	0	30000	0
929	ECG Electrode (Detail in RC) [S104]	S105	0	0	0	0	0	500	0
930	Surgical Blade Sterile, Size 23 Single Peel package in metal foil As per IS 3319 (Detail in RC) [S105]	S106	0	1400	1400	0	1400	1000	14900
931	Sterile Hypodermic Syringe with Needle attached, 22G, Single Use - 50 ml (Detail in RC) [S106]	S107	0	0	0	0	0	300	0
	Urethral Catheter 90 (FG-14) made up of								

Handwritten signature and stamp: "T.M. SURESH" and "General Manager".

S.No.	Drug Name	Drug Code	Demand 20_21	IndentQty 20_21	ReceivedfromDDW 20_21	LocalPurchaseQty 20_21	Total Rec Qty	Demand_Qty 21_22	Demand_Value 21_22
	medical grade PVC (Detail in RC) [S107]								
932	Urethral Catheter 91 (FG-10), made up of medical grade PVC (Detail in RC) [S108]	S108	0	0	0	0	0	300	0
933	Vacuum Suction Set, 2.5 meter Length (Detail in RC) [S109]	S109	0	0	0	0	0	5000	0
934	Epidural Minipack 18G, 80mm-90mm, Metal Stylet For Single Use only, Sterile (Detail in RC) [S110]	S110	0	0	0	0	0	0	0
935	Vascular Catheter with metal Guide No. 16, Double Lumen Size 30 cm (Longline IV) (Detail in RC) [S111]	S111	0	0	0	0	0	0	0
936	Vascular Catheter with metal Guide No. 18 Double Lumen Size 30 cm (Longline IV) (Detail in RC) [S112]	S112	0	0	0	0	0	0	0
937	Vascular Catheter with metal Guide No. 20 Double Lumen Size 30 cm (Longline IV) (Detail in RC) [S113]	S113	0	0	0	0	0	0	0
938	Vascular Catheter with metal Guide No. 22 Double Lumen Size 30 cm (Longline IV) (Detail in RC) [S114]	S114	0	0	0	0	0	0	0
939	Vascular Catheter with metal Guide No. 16 Double Lumen Size 45 cm (Longline IV) (Detail in RC) [S115]	S115	0	0	0	0	0	0	0
940	Vascular Catheter with	S116	0	0	0	0	0	0	0

89

S.No.	Drug Name	Drug Code	Demand 20_21	IndentQty 20_21	ReceivedfromDDW 20_21	LocalPurchaseQty 20_21	Total Rec Qty	Demand Qty 21_22	Demand Value 21_22
941	metal Guide No. 18 Double Lumen Size 45 cm (Longline IV) (Detail in RC) [S116] Vascular Catheter with metal Guide No. 20 Double Lumen Size 45 cm (Longline IV) (Detail in RC) [S117]	S117	0	0	0	0	0	0	0
942	Vascular Catheter with metal Guide No. 22 Double Lumen Size 45 cm (Longline IV) (Detail in RC) [S118]	S118	0	0	0	0	0	0	0
943	3 Way Stop Cock, Non Pyrogenic and Single Use, should be leak proof, with smooth movements (Detail in RC) [S119]	S119	0	0	0	0	0	200	0
944	3 Way Stop Cock with extension Tube (Vein-O Extension Line) size 10cm (Non Pyrogenic & Single Use) (Detail in RC) [S120]	S120	0	0	0	0	0	0	0
945	3 Way Stop Cock with extension Tube (Vein-O Extension Line) size 50cm (Non Pyrogenic & Single Use) (Detail in RC) [S121]	S121	0	0	0	0	0	0	0
946	3 Way Stop Cock with extension Tube (Vein-O Extension Line) size 100cm (Non Pyrogenic & Single Use) (Detail in RC) [S122]	S122	0	0	0	0	0	200	0
947	3 Way Stop Cock with extension Tube (Vein-O Extension Line) size	S123	0	0	0	0	0	1000	0

विकास आयोग
 १००० रु. तक का प्रमाणित
 १००० रु. तक का प्रमाणित

S.No.	Drug Name	Drug Code	Demand 20_21	IndenQty 20_21	ReceivedfromDDW 20_21	LocalPurchaseQty 20_21	Total Rec Qty	Demand Qty 21_22	Demand Value 21_22
948	150cm (Non Pyrogenic & Single Use) (Detail in RC) [S1231]	S124	0	0	0	0	0	30	0
949	Abdominal Drain Kit, Sterile, having drainage catheter and Collection Bag (2000 ml) (size 16) (Detail in RC) [S1241]	S125	0	0	0	0	0	30	0
950	Abdominal Drain Kit, Sterile, having drainage catheter and Collection Bag (2000 ml) (size 20) (Detail in RC) [S1251]	S126	0	0	0	0	0	50	0
951	Nasal Prong Neonatal (Flexible Medical Grade, 2 Meter Long, Multichannel Kink Resistance Tube (Detail in RC) [S1261]	S127	0	150	150	0	150	2000	41460
952	Elastic Adhesive Bandage BP 10cm X 1mtr Stretched Length Adhesive material should have good quality sticking property (Detail in RC) [S1271]	S128	0	0	0	0	0	600	0
953	Sterile Disposable (Single Use Teflon/PTFE I V Cannula with integrated 3 way stop cock Size 26G (Detail in RC) [S1281]	S129	0	1080	1030	0	1030	500	313500
954	NIV Mask (Noninvasive Ventilation Mask) Oro nasal covering (Nose & Mouth) mask Adult Large Size for Ventilator without vent (Detail in RC) [S1291]	S130	0	30	30	0	30	100	61900

9/11/22

S.No.	Drug Name	Drug Code	Demand 20_21	IndentQty 20_21	ReceivedfromDDW 20_21	LocalPurchaseQty 20_21	Total Rec Qty	Demand Qty 21_22	Demand Value 21_22
	nasal covering (Nose & Mouth) mask Adult Medium Size for Ventilator without vent (Detail in RC) [S130]								
955	NIV Mask (Noninvasive Ventilation Mask) Oro nasal covering (Nose & Mouth) mask Adult Large Size for BIPAP with vent (Detail in RC) [S131]	S131	0	30	30	0	30	100	63000
956	NIV Mask (Noninvasive Ventilation Mask) Oro nasal covering (Nose & Mouth) mask Adult Medium Size for BIPAP with vent (Detail in RC) [S132]	S132	0	30	30	0	30	100	62900
957	NIV Mask (Noninvasive Ventilation Mask) Oro nasal mask Paediatric with Bronchoscopy and CO2 and O2 port with chin support (Detail in RC) [S133]	S133	0	0	0	0	0	20	49500
958	Nebulization Mask Adult (Detail in RC) [S134]	S134	0	500	0	0	0	10000	225000
959	Nebulization Mask Paediatric (Detail in RC) [S135]	S135	0	0	0	0	0	200	4500
960	Chemotherapy Port and Non-coring needles(Adult) (Detail in RC) [S136]	S136	0	0	0	0	0	0	0
961	Chemotherapy Port & Non-coring needles(Pediatric) (Detail in RC) [S137]	S137	0	0	0	0	0	0	0
962	Oseltamivir Capsule IP	639	2000	0	0	0	0	1000	14850

वर्तमान संदर्भ के लिए प्रमाणित किया गया है

92

S.No.	Drug Name	Drug Code	Demand 20_21	IndentQty 20_21	ReceivedfromDDW 20_21	LocalPurchaseQty 20_21	Total Rec Qty	Demand Qty 21_22	Demand Value 21_22
	75 mg Capsule/each Capsule Contains Osetamivir Phosphate equivalent to Osetamivir 75 mg) [639]								
963	Osetamivir Capsule IP 45 mg Capsule/each Capsule Contains Osetamivir Phosphate equivalent to Osetamivir 45 mg) [640]	640	200	0	0	0	0	100	2147
964	Osetamivir Capsule IP 30 mg (Each Capsule Contains Osetamivir Phosphate equivalent to Osetamivir 30 mg) [641]	641	500	0	0	0	0	100	720
965	Osetamivir Phosphate for Oral Suspension IP 12 mg/ml (Each ml contains 12 mg Osetamivir base after reconstitution) [642]	642	0	0	0	0	0	0	0
966	Osetamivir Phosphate for Oral Suspension IP 12 mg/ml (Each ml contains 12 mg Osetamivir base after reconstitution) [642A]	642A	50	0	0	0	0	10	2589
967	ACT Kit Containing 3 tablets of Artesunate (25mg each) and 1 tablet of Sulphadoxine and Pyrimethamine(250mg+12.5mg) [645]	645	0	0	0	0	0	0	0
968	ACT Kit Containing 3 tablets of Artesunate(50 mg each) and 1 tablet of Sulphadoxine and	646	0	0	0	0	0	0	0

93

S.No.	Drug Name	Drug Code	Demand 20_21	IndentQty 20_21	ReceivedfromDDW 20_21	LocalPurchaseQty 20_21	Total Rec Qty	Demand_Qty 21_22	Demand_Value 21_22
	Pyrimethamine(500mg+25mg) [646]								
969	ACT Kit Containing 3 tablets of Artesunate(100 mg each) and 1 tablet of Sulphadoxine and Pyrimethamine(750mg+37.5mg) [647]	647	0	0	0	0	0	0	0
970	ACT Kit Containing 3 tablets of Artesunate(150 mg each) and 2 tablet of Sulphadoxine and Pyrimethamine(500mg+25mg) [648]	648	0	0	0	0	0	0	0
971	Each Combi Bliste pack: Containing 3 tablets of Artesunate(200 mg each) and 2 tablet of Sulphadoxine Pyrimethamine(750mg+37.5mg)each or 3 Tablets of Sulphadoxine Pyrimethamine(500+25) mg [649]	649	0	0	0	0	0	0	0
Grand Total :									32362900

Note: Kindly Send Hard Copy of this page duly Signed to CMHO and Keeping a Photo Copy with the Institution.

Authority Name and Signature

[Signature]
 Director, District Health Office,
 Dibrugarh, Assam

[Signature]
 Director, District Health Office,
 Dibrugarh, Assam

3008